



BUILDING CODE COMPLIANCE OFFICE (BCCO)
PRODUCT CONTROL DIVISION

MIAMI-DADE COUNTY, FLORIDA
METRO-DADE FLAGLER BUILDING
140 WEST FLAGLER STREET, SUITE 1603
MIAMI, FLORIDA 33130-1563
(305) 375-2901 FAX (305) 375-2908

NOTICE OF ACCEPTANCE (NOA)

Industrial Millwork Corp.
West Highway 36
Seneca, KS 66538

SCOPE:

This NOA is being issued under the applicable rules and regulations governing the use of construction materials. The documentation submitted has been reviewed by Miami-Dade County Product Control Division and accepted by the Board of Rules and Appeals (BORA) to be used in Miami Dade County and other areas where allowed by the Authority Having Jurisdiction (AHJ).

This NOA shall not be valid after the expiration date stated below. The Miami-Dade County Product Control Division (In Miami Dade County) and/or the AHJ (in areas other than Miami Dade County) reserve the right to have this product or material tested for quality assurance purposes. If this product or material fails to perform in the accepted manner, the manufacturer will incur the expense of such testing and the AHJ may immediately revoke, modify, or suspend the use of such product or material within their jurisdiction. BORA reserves the right to revoke this acceptance, if it is determined by Miami-Dade County Product Control Division that this product or material fails to meet the requirements of the applicable building code.

This product is approved as described herein, and has been designed to comply with the Florida Building Code, including the High Velocity Hurricane Zone.

DESCRIPTION: Tener Series Wood Entry Door

APPROVAL DOCUMENT: Drawing No. LAG-TEN, titled "Tenners Wood Entry Doors", sheets 1 through 9 of 9, prepared, by Bromley-Cook Engineering, Inc., dated 04/05/04, signed and sealed by William D. Cook, P.E. bearing the Miami-Dade County Product Control Approval stamp with the Notice of Acceptance number and approval date by the Miami-Dade County Product Control Division.

MISSILE IMPACT RATING: Large and Small Missile Impact

LABELING: Each unit shall bear a permanent label with the manufacturer's name or logo, city, state and following statement: "Miami-Dade County Product Control Approved", unless otherwise noted herein.

RENEWAL of this NOA shall be considered after a renewal application has been filed and there has been no change in the applicable building code negatively affecting the performance of this product.

TERMINATION of this NOA will occur after the expiration date or if there has been a revision or change in the materials, use, and/or manufacture of the product or process. Misuse of this NOA as an endorsement of any product, for sales, advertising or any other purposes shall automatically terminate this NOA. Failure to comply with any section of this NOA shall be cause for termination and removal of NOA.

ADVERTISEMENT: The NOA number preceded by the words Miami-Dade County, Florida, and followed by the expiration date may be displayed in advertising literature. If any portion of the NOA is displayed, then it shall be done in its entirety.

INSPECTION: A copy of this entire NOA shall be provided to the user by the manufacturer or its distributors and shall be available for inspection at the job site at the request of the Building Official.

This NOA consists of this page 1 and evidence pages E-1 and E-2, as well as approval document mentioned above.

The submitted documentation was reviewed by **Manuel Perez, P.E.**



NOA No 04-0427.05
Expiration Date: August 5, 2009
Approval Date: August 5, 2004
Page 1

Industrial Millwork Corp.

NOTICE OF ACCEPTANCE:EVIDENCE SUBMITTED

A. DRAWINGS

1. Manufacturer's die drawings and sections.
2. Drawing No. **LAG-TEN**, titled "Tenners Wood Entry Doors", sheets 1 through 9 of 9, dated 04/05/04, prepared by Bromley-Cook Engineering, Inc. signed and sealed by William D. Cook, P.E.

B. TESTS

1. Test reports on 1) Air Infiltration Test, per FBC, TAS 202-94
2) Uniform Static Air Pressure Test, Loading per FBC, TAS 202-94
3) Water Resistance Test, per FBC, TAS 202-94
4) Large Missile Impact Test per FBC, TAS 201-94
5) Cyclic Wind Pressure Loading per FBC, TAS 203-94
6) Forced Entry Test, per FBC 2411.3.2.1 (b) and TAS 202-94
along with marked-up drawings and installation diagram of a stile and wood entry door, prepared by Hurricane Test Laboratory, LLC, Test Report No. **HTL-0210-0422-03**, specimen # 1, dated 04/17/03, signed and sealed by Vinu J. Abraham, P.E.
2. Test reports on 1) Uniform Static Air Pressure Test, Loading per FBC, TAS 202-94
2) Forced Entry Test, per FBC 2411.3.2.1 (b) and TAS 202-94
along with marked-up drawings and installation diagram of a wood entry door, prepared by Hurricane Test Laboratory, LLC, Test Report No. **HTL-0210-1206-02**, specimen # 1, dated 12/04/02, signed and sealed by Vinu J. Abraham, P.E.
3. Test reports on 1) Uniform Static Air Pressure Test, Loading per FBC, TAS 202-94
2) Large Missile Impact Test per FBC, TAS 201-94
3) Cyclic Wind Pressure Loading per FBC, TAS 203-94
along with marked-up drawings and installation diagram of a wood entry door, prepared by Hurricane Test Laboratory, LLC, Test Report No. **HTL-0210-1206-02**, specimen # 2, dated 12/19/02, signed and sealed by Vinu J. Abraham, P.E.
4. Test reports on 1) Air Infiltration Test, per FBC, TAS 202-94
2) Water Resistance Test, per FBC, TAS 202-94
3) Large Missile Impact Test per FBC, TAS 201-94
4) Cyclic Wind Pressure Loading per FBC, TAS 203-94
5) Forced Entry Test, per FBC 2411.3.2.1 (b) and TAS 202-94
along with marked-up drawings and installation diagram of a stile and wood entry door, prepared by Hurricane Test Laboratory, LLC, Test Report No. **HTL-0210-1206-02**, specimen # 10, dated 01/31/03, signed and sealed by Vinu J. Abraham, P.E.



Manuel Perez, P.E.
Product Control Examiner
NOA No 04-0427.05
Expiration Date: August 5, 2009
Approval Date: August 5, 2004

Industrial Millwork Corp.

NOTICE OF ACCEPTANCE:EVIDENCE SUBMITTED

5. Test reports on 1) Large Missile Impact Test per FBC, TAS 201-94
2) Cyclic Wind Pressure Loading per FBC, TAS 203-94
along with marked-up drawings and installation diagram of a wood entry door,
prepared by Hurricane Test Laboratory, LLC, Test Report No. **HTL-0210-1206-02**,
specimen # 3, dated 01/10/03, signed and sealed by Vinu J. Abraham, P.E.
6. Test reports on 1) Uniform Static Air Pressure Test, Loading per FBC, TAS 202-94
2) Large Missile Impact Test per FBC, TAS 201-94
3) Cyclic Wind Pressure Loading per FBC, TAS 203-94
4) Forced Entry Test, per FBC 2411.3.2.1 (b) and TAS 202-94
along with marked-up drawings and installation diagram of a stile and wood entry
door, prepared by Hurricane Test Laboratory, LLC, Test Report No. **HTL-0210-0909-
02**, specimen # 1, dated 09/06/02, signed and sealed by Vinu J. Abraham, P.E.
7. Test reports on 1) Uniform Static Air Pressure Test, Loading per FBC, TAS 202-94
2) Large Missile Impact Test per FBC, TAS 201-94
3) Cyclic Wind Pressure Loading per FBC, TAS 203-94
4) Forced Entry Test, per FBC 2411.3.2.1 (b) and TAS 202-94
along with marked-up drawings and installation diagram of a stile and wood entry
door, prepared by Hurricane Test Laboratory, LLC, Test Report No. **HTL-0210-0909-
02**, specimen # 4, dated 02/17/03, signed and sealed by Vinu J. Abraham, P.E.

C. CALCULATIONS

1. Anchor calculations ASTM-E1300, and structural analysis, prepared by Bromley-
Cook Engineering, dated 04/23/04, signed and sealed by William D. Cook, P.E.

D. QUALITY ASSURANCE

1. Miami Dade Building Code Compliance Office (BCCO).

E. MATERIAL CERTIFICATIONS

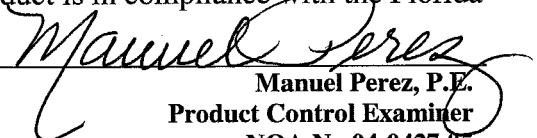
1. Notice of Acceptance No. **03-0225.10** issued to Glasslam NGI Inc. for their "**Safety-
Plus II - Laminated Glass**" dated 08/07/03, expiring on 08/07/08.

F. STATEMENTS

1. Statement letter of conformance dated February 21, 2004, signed and sealed by
William D. Cook, P.E.
2. Statement letter of no financial interest, dated February 21, 2004, signed and sealed by
William D. Cook, P. E.

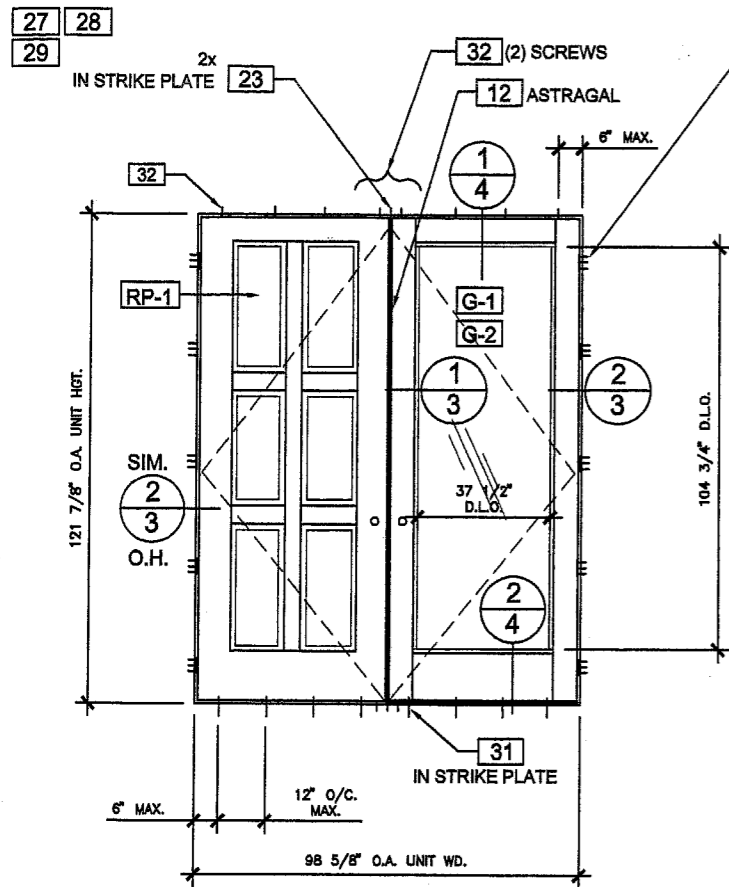
G. OTHER

1. Letter from the consultant stating that the product is in compliance with the Florida
Building Code (FBC).

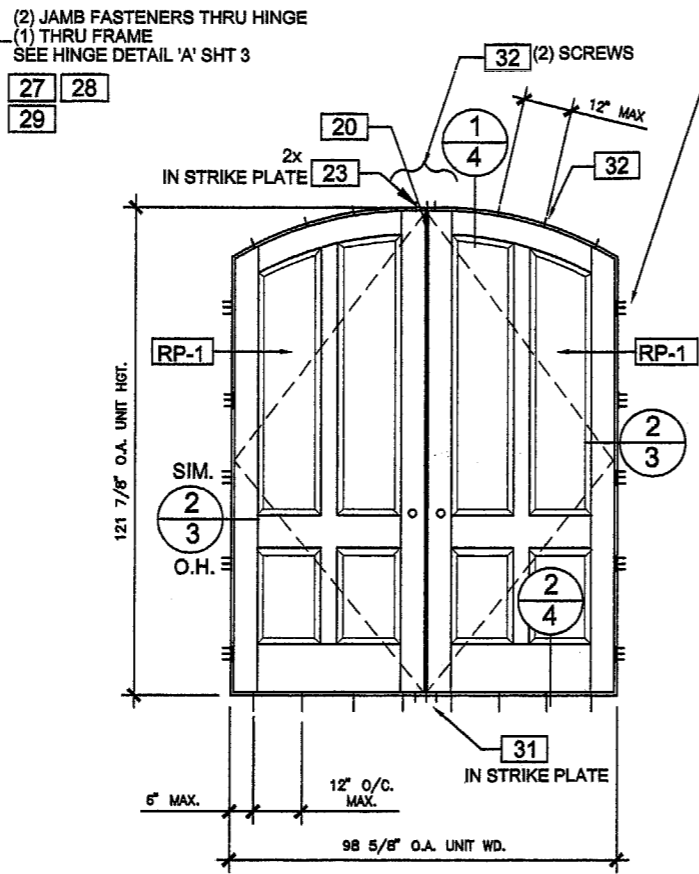


Manuel Perez, P.E.
Product Control Examiner
NOA No 04-0427.05
Expiration Date: August 5, 2009
Approval Date: August 5, 2004

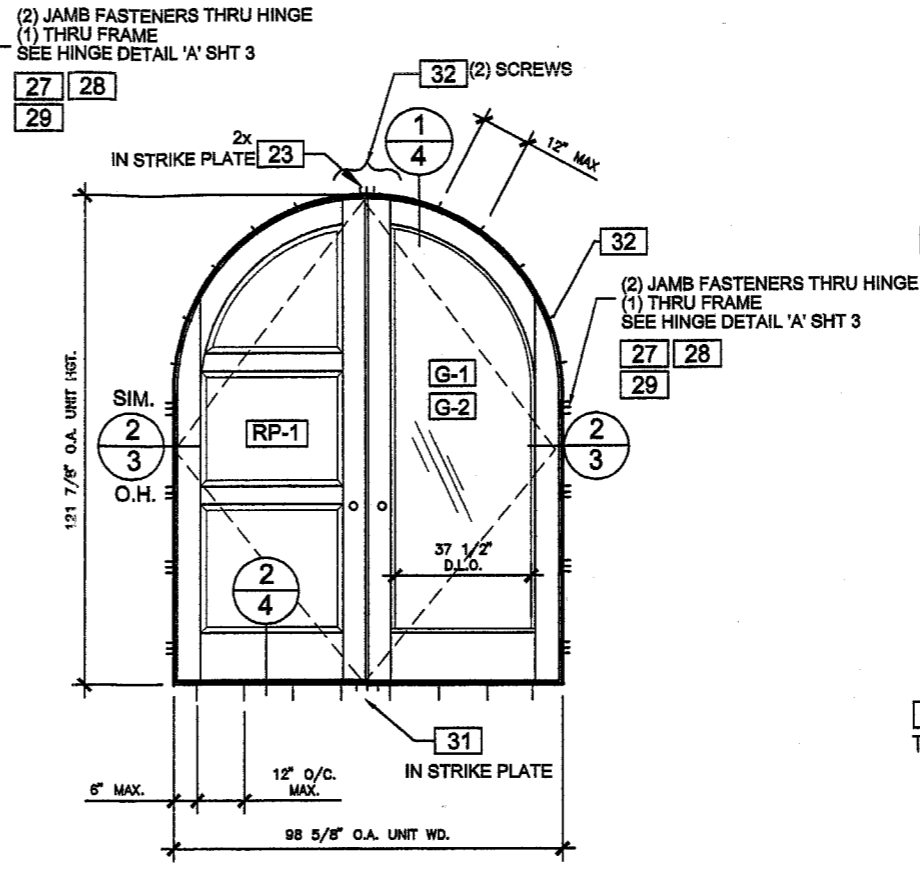
TENERS SERIES WOOD DOORS



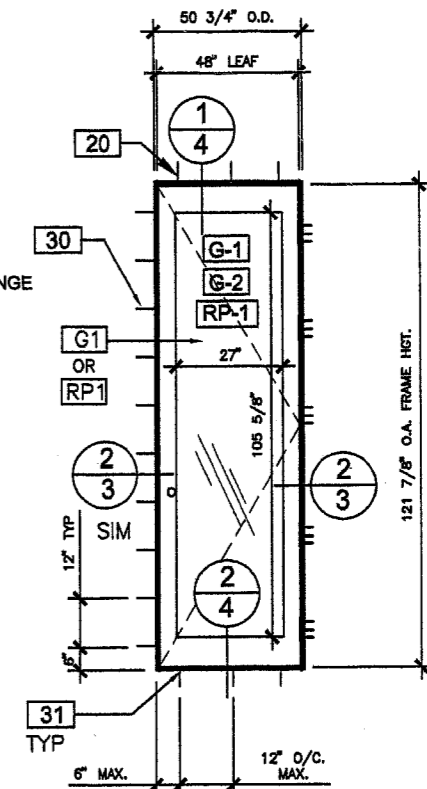
RECTANGULAR DOOR



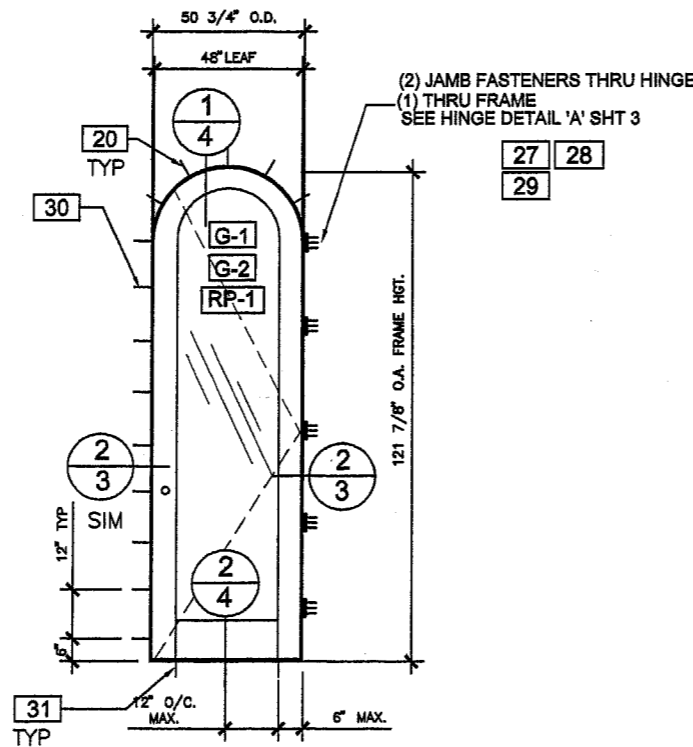
EYEBROW TOP DOOR



ARCHED TOP DOOR



TYPICAL SINGLE LEAF DOORS



TYPICAL SINGLE LEAF DOORS
VIEWED FROM EXTERIOR

GENERAL NOTES:

1. THIS DOOR SYSTEM HAS BEEN TESTED, ANALYZED AND APPROVED FOR DESIGN PRESSURES NOT TO EXCEED THOSE SHOWN IN THE DESIGN LOAD TABLES.
2. BUCK, OPENINGS & BUCK FASTENERS MUST BE DESIGNED & INSTALLED TO WITHSTAND WIND LOADS FOR EACH APPLICATION.
3. BUCK FASTENERS MAY NOT EXCEED 16" O.C. SPACING AROUND OPENINGS.
4. ALL HARDWARE & FASTENERS SHALL BE IN ACCORDANCE WITH THESE DRAWINGS & MAY NOT VARY UNLESS SPECIFICALLY MENTIONED ON THE DRAWINGS.
5. THE DETAILS & SPECIFICATIONS SHOWN HEREIN REPRESENT THE PRODUCTS TESTED FOR WATER, AIR, IMPACT, CYCLIC & UNIFORM STATIC AIR PRESSURE TESTING IN CONFORMANCE WITH DADE COUNTY PROTOCOLS PA-201, 202 & 203.
6. ALL JAMB TO BUCK FASTENERS MUST PENETRATE THE BUCK A MINIMUM OF 1 1/4". IF PENETRATION IS LESS THAN 1 1/4", SCREW LENGTH SHALL BE INCREASED AS REQUIRED.
7. THESE DOOR SYSTEMS HAVE BEEN DESIGNED IN ACCORDANCE WITH THE 2001 FLORIDA BUILDING CODE.

DOOR PANEL OPTIONS	
G1	TYPICAL GLAZING (SEE GLAZING DETAIL "4/3") 7/16" LAMINATED GLAS-LAM "SAFETY PLUS" 2 - 3/16" TEMP. - 100" POLYESTER RESIN CORE - WITH .010" PET FILM - 3/16" TEMP. - P.E.T. FILM EXTENDS 1 1/8" PAST GLASS EDGE TYP. -
G2	INSULATED GLAZING (SEE GLAZING DETAIL "5/3") 1" INSULATED GLAS-LAM "SAFETY PLUS" 2 1/8" ANN. - .125" POLYESTER RESIN CORE WITH .010" PET FILM 1/8" TEMP. - 1/2" AIRSPACE - 1/8" TEMP. INSIDE LITE - P.E.T. FILM EXTENDS 1" PAST GLASS EDGE TYP. -
RP1	TYPICAL WOOD PANEL (SEE WOOD PANEL DETAIL "4/4") RAISED WOOD PANEL, MAHOGANY 1 1/2" THICK @ CENTER 5/8" THICK @ EDGES
DOOR PANEL MAY BE RAISED WOOD PANEL OR GLAZED OR COMBINATIONS REFER TO SHEETS 6 AND 7 FOR PANEL OPTIONS	
MAXIMUM ALLOWABLE WIND PRESSURE FOR LARGE MISSILE IMPACT DOORS: SEE CHARTS ON SHEET 9	
HARDWARE: G-U : MULTI-POINT HARDWARE W & F : MULTI-POINT HARDWARE KWIKSET: TITAN SERIES CYLINDER LOCK & DEAD BOLT (GRADE 2) or SIM. SEE SHEET 2 FOR DETAILS	

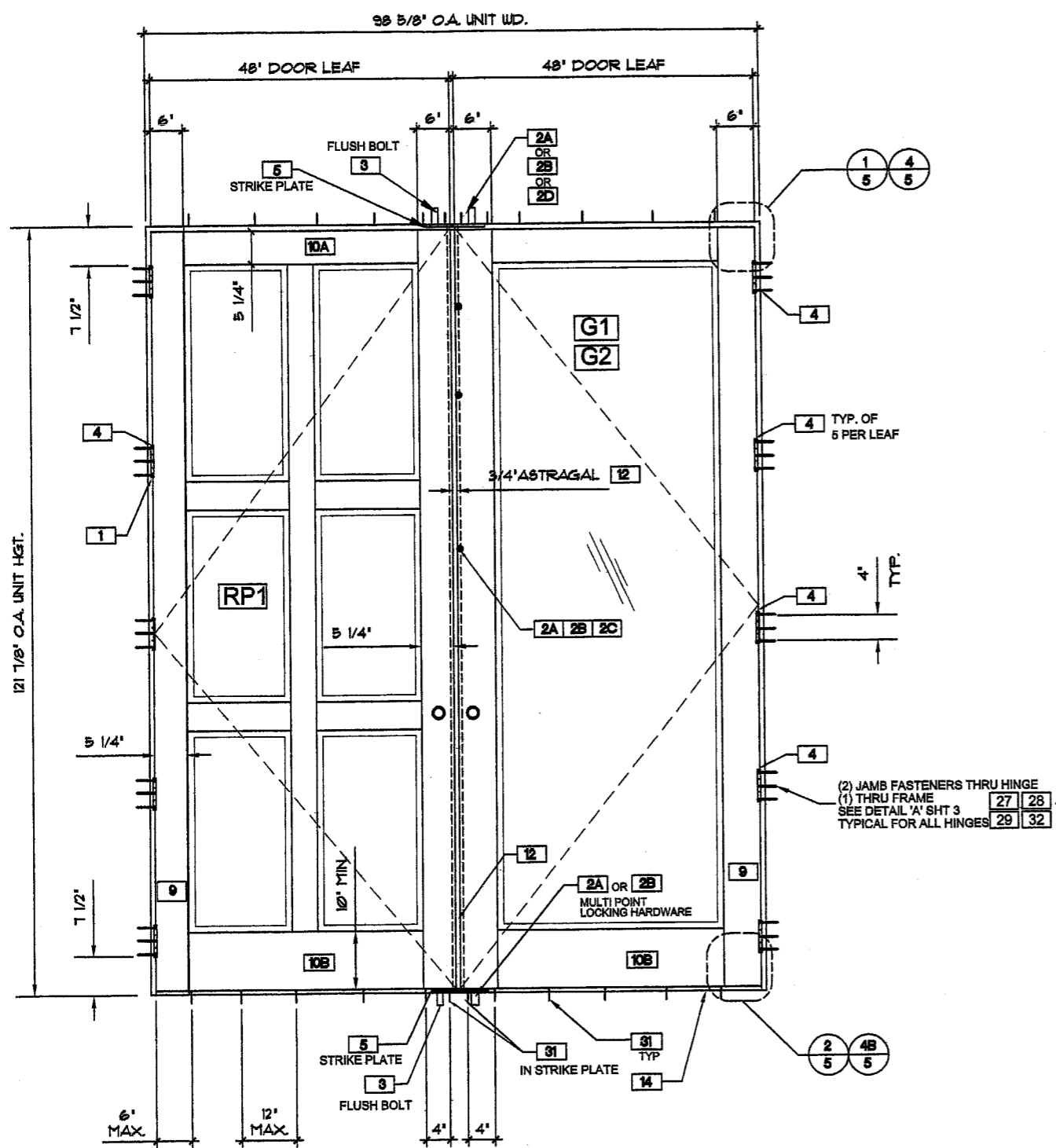
MULTIPLE UNIT CONFIGURATIONS

VIEWED FROM EXTERIOR
OUT-SWING DOORS SHOWN
IN-SWING DOORS ARE SAME
DETAILS EXCEPT FRAMES ARE
INSTALLED REVERSE

FOR IN-SWING DOOR THRESHOLD
SEE DETAILS 2A & 3A ON SHEET 4

Approved as complying with the
Florida Building Code
Date **AUG. 5, 2004**
NOA# **04-0427.05**
Miami Dade Product Control
Division
By *William D. Cook*

DATE	
BY	
REVISION DESCRIPTION	
NO.	1 2 3 4
DRAWING TITLE	TENERS WOOD ENTRY DOORS
MANUFACTURER	LAG DESIGN INDUSTRIAL MILLWORK CORP WEST HWAY 36 SENECA, KS 66538 (800)462-3667
BROMLEY - COOK ENGINEERING, INC.	
STRUCTURAL ENGINEERING SERVICES	
2004 N.E. 48th STREET FORT LAUDERDALE, FL 33308 PHONE: (954) 772-4624 FAX: (954) 772-4634	
CERTIFICATION	APR 23 2004 WILLIAM D. COOK, P.E. FLA. P.E. NO. 43904
DATE:	04/05/04
DRAWING NO:	LAG-TEN
SHEET NO:	1 OF 9



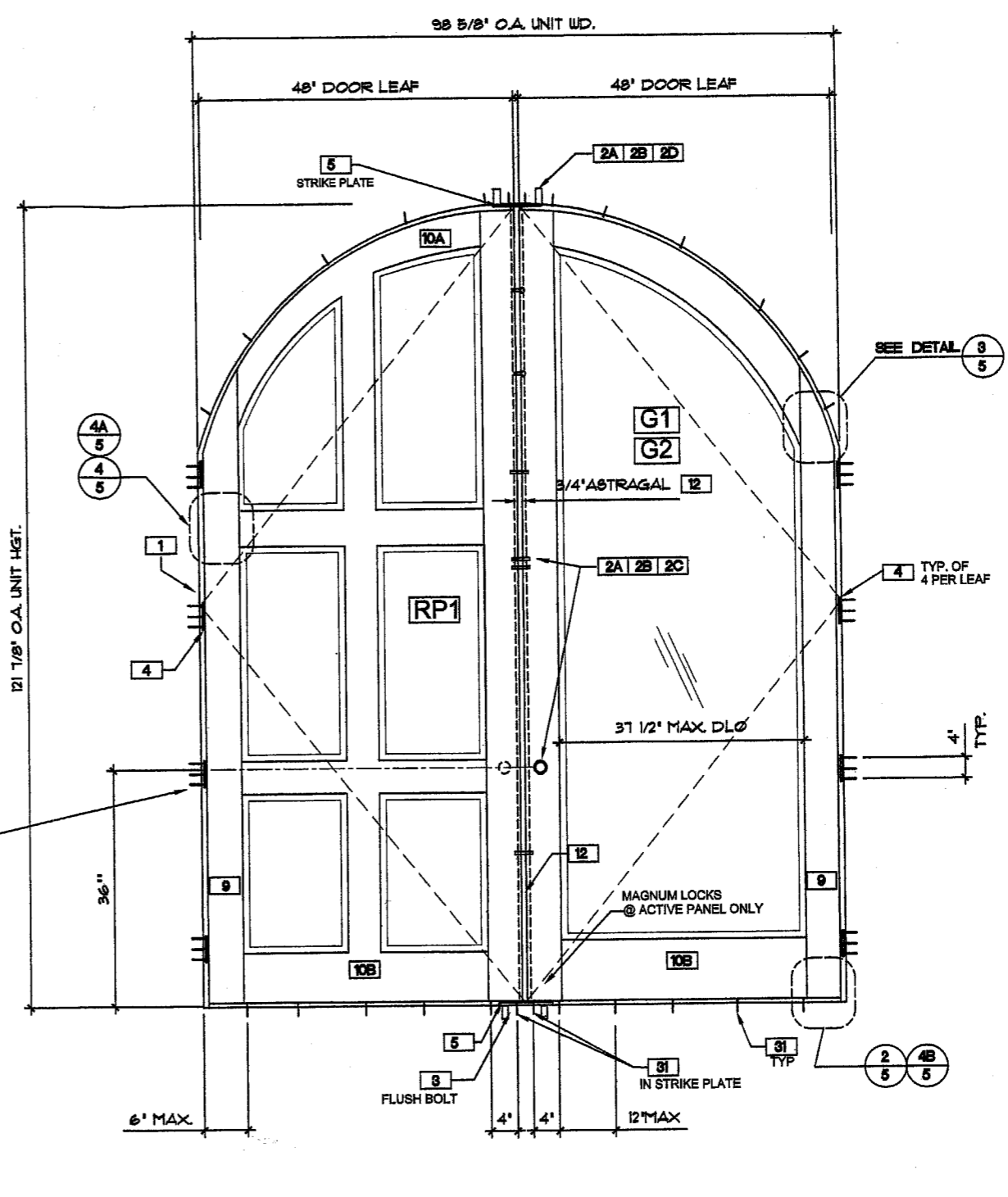
**ELEVATION OF OUTSWING WOOD DOORS
DOOR ASSEMBLY DETAILS**
(UNIT SHOWN FROM EXTERIOR)
SCALE: 1/2" = 1'-0"

NOTE: FOR INSWING DOORS DETAILS
ARE SAME EXCEPT FRAMES ARE
INSTALLED REVERSED.

HARDWARE:
W & F MANUFACTURING:
ACTIVE LEAF: TRILIAN 3 POINT LOCK w/ MAGNUM SLIDE BOLT
TOP & BOTTOM
INACTIVE LEAF: G.U. DOUBLE ACTING FLUSH BOLT.

KWIKSET:
ACTIVE LEAF: TITAN SERIES CYLINDER LOCK & DEAD BOLT
W / MAGNUM SLIDE BOLT @ HEAD AND SILL
INACTIVE LEAF: G.U. DOUBLE ACTING FLUSH BOLT.

G.U. CREMONA:
ACTIVE LEAF: 6 POINT DOOR BOLT SYSTEM
INACTIVE LEAF: G.U. DOUBLE ACTING FLUSH BOLT.

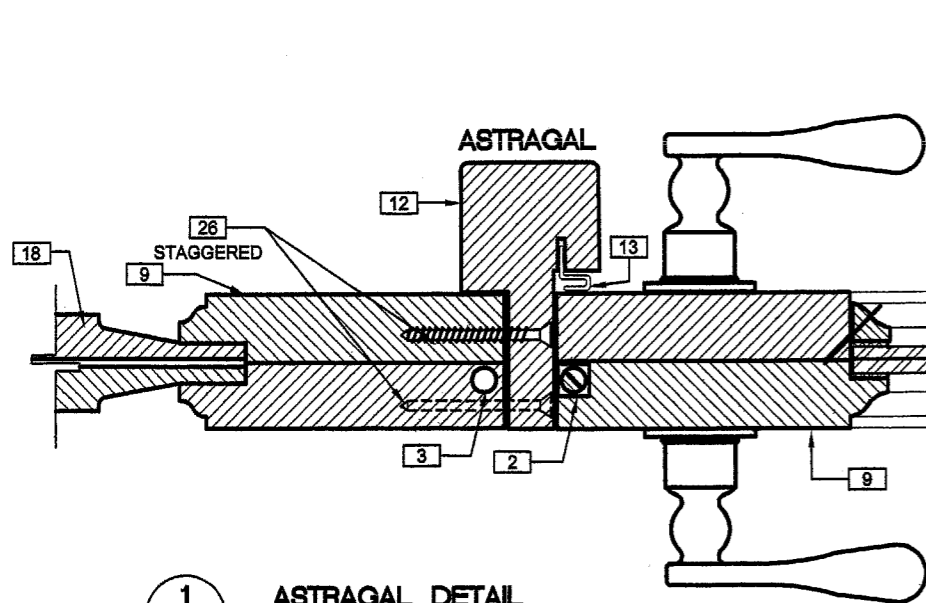


**ELEVATION OF OUTSWING ARCHED TOP DOORS
DOOR ASSEMBLY DETAILS**
(UNIT SHOWN FROM EXTERIOR)
SCALE: 1/2" = 1'-0"

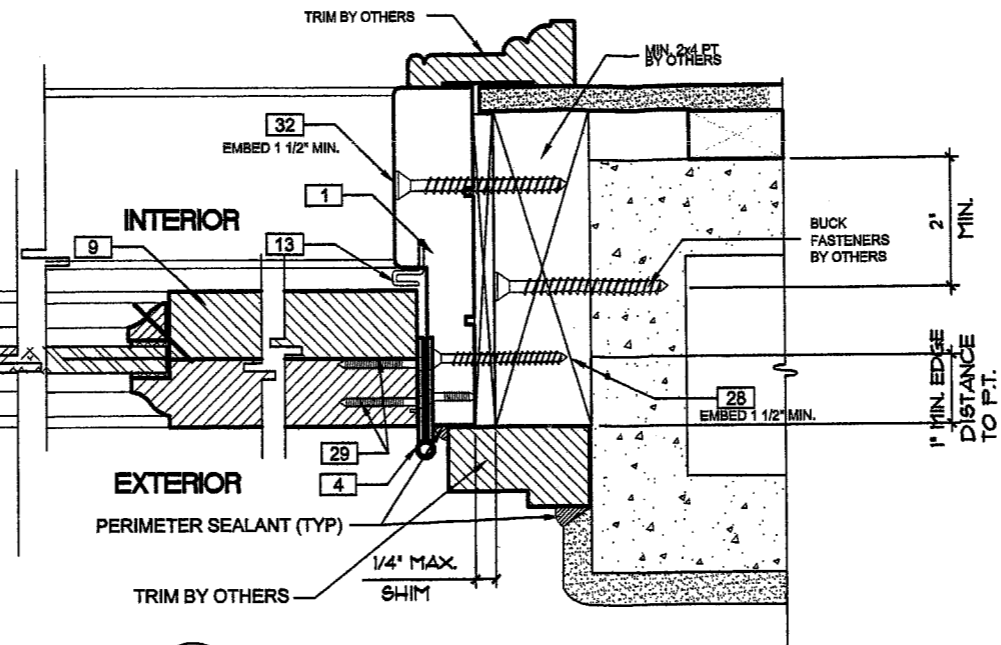
NOTE: FOR INSWING DOORS DETAILS
ARE SAME EXCEPT FRAMES ARE
INSTALLED REVERSED.

Approved as complying with the
Florida Building Code
Date AUG. 5 2004
NOAH 04-0427.05
Miami Dade Product Control
Division
By *Manuel Perez*

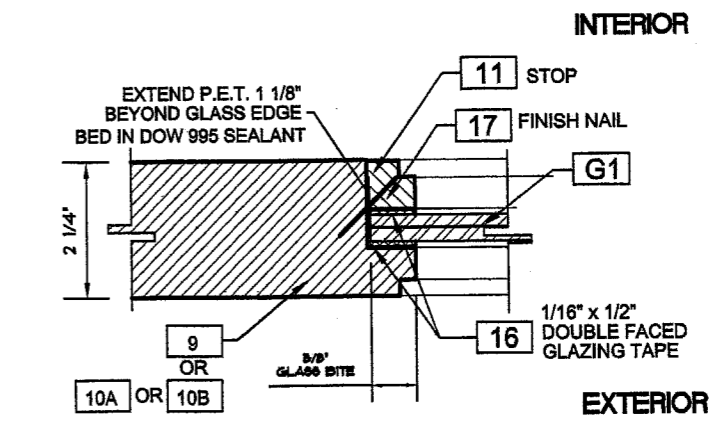
DATE	
BY	
REVISION DESCRIPTION	
NO.	1
DRAWING TITLE	TENNERS WOOD ENTRY DOORS
MANUFACTURER	LAG DESIGN INDUSTRIAL MILLWORK CORP WEST HWAY 36 SENECA, KS 66538 (800)462-3667
BROMLEY - COOK ENGINEERING, INC.	STRUCTURAL ENGINEERING SERVICES 2004 N.E. 40th STREET FORT LAUDERDALE, FL 33308 PHONE: (954) 772-4624 FAX: (954) 772-4634
CERTIFICATION	APR 28 2004 WILLIAM D. COOK, P.E. FLA. P.E. NO. 43904
DATE:	04/05/04
DRAWING NO:	LAG-TEN
SHEET NO:	2 OF 9



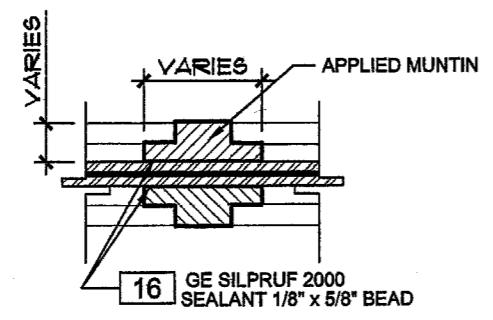
1
3 **ASTRAGAL DETAIL**
SCALE: HALF SCALE
(SEE SHEET 4 FOR JAMB
INSTALLATION DETAILS)



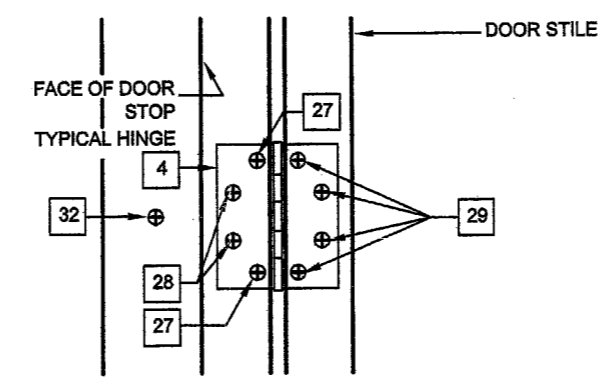
2
3 **JAMB DETAIL**
SCALE: HALF SCALE



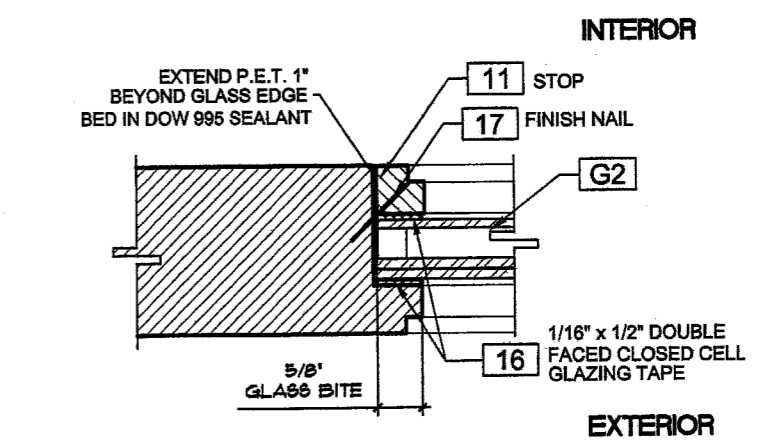
4
3 **GLASS DETAIL FOR IMPACT DOORS**



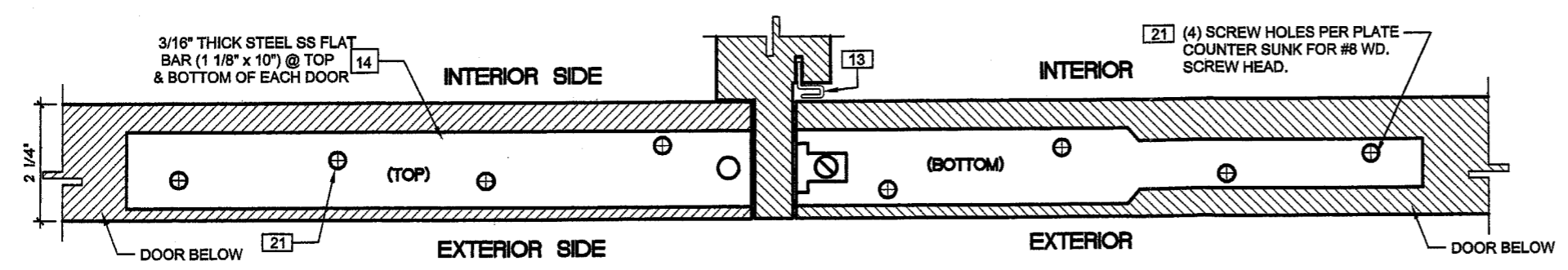
16 GE SILPRUF 2000
SEALANT 1/8" x 5/8" BEAD
**DECORATIVE SURFACE
APPLIED MUNTINS**
SCALE: NTS



DETAIL 'A'
(TYPICAL AT ALL HINGES)



5
3 **INSULATED GLASS DETAIL FOR IMPACT DOORS**



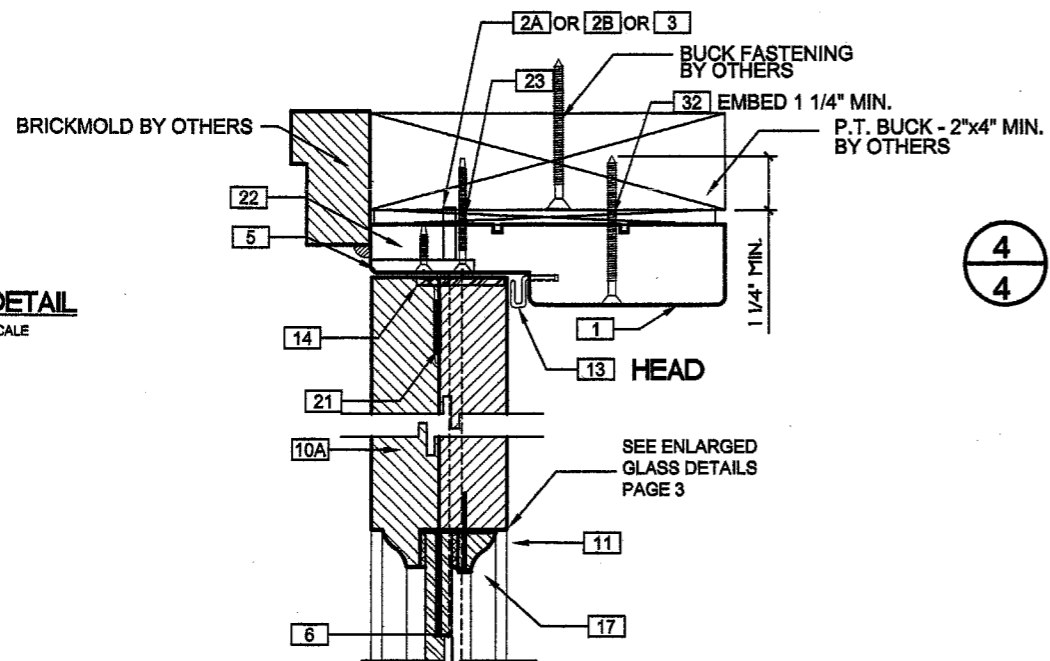
3
3 **STEEL FLAT BAR DETAILS**
(APPLIED TO TOP AND BOTTOM OF EACH DOOR)
SCALE: HALF SCALE

Approved as complying with the
Florida Building Code
Date AVG 5, 2004
NOA# 04-0427.05
Miami Dade Product Control
Division
By Manuel Perez

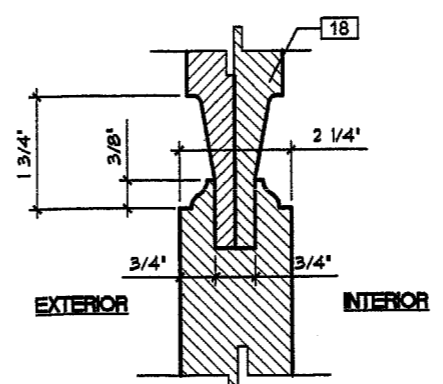
REVISION DESCRIPTION	BY	DATE
1		

DRAWING TITLE	TENNERS WOOD ENTRY DOORS
MANUFACTURER	LAG DESIGN INDUSTRIAL MILLWORK CORP WEST HWAY 36 SENECA, KS 66538 (800)462-3667
BROMLEY - COOK ENGINEERING, INC.	STRUCTURAL ENGINEERING SERVICES 2004 N.E. 48th STREET FORT LAUDERDALE, FL 33308 PHONE: (954) 772-4624 FAX: (954) 772-4634
CERTIFICATION	APR 23 2004 WILLIAM D. COOK, P.E. FLA. P.E. NO. 43904
DATE:	04/05/04
DRAWING NO:	LAG-TEN
SHEET NO:	3 OF 9

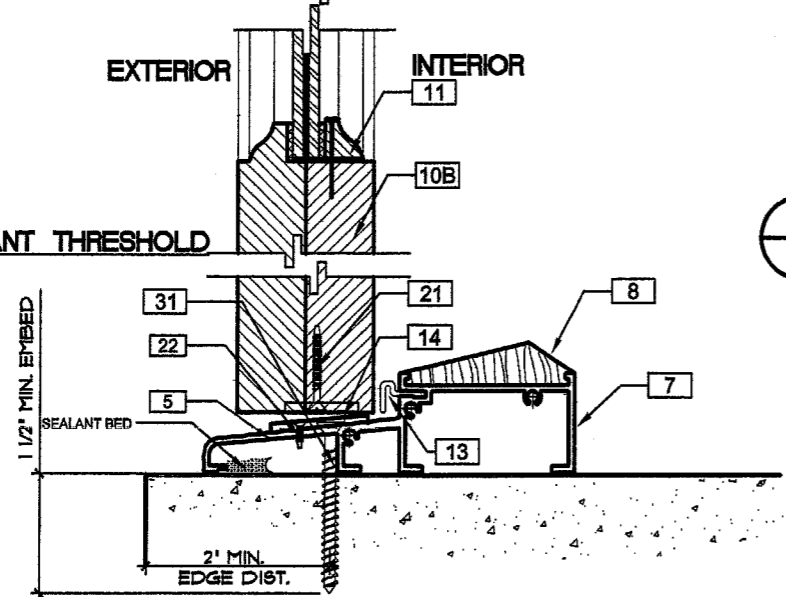
1
4 HEAD DETAIL
SCALE: HALF SCALE



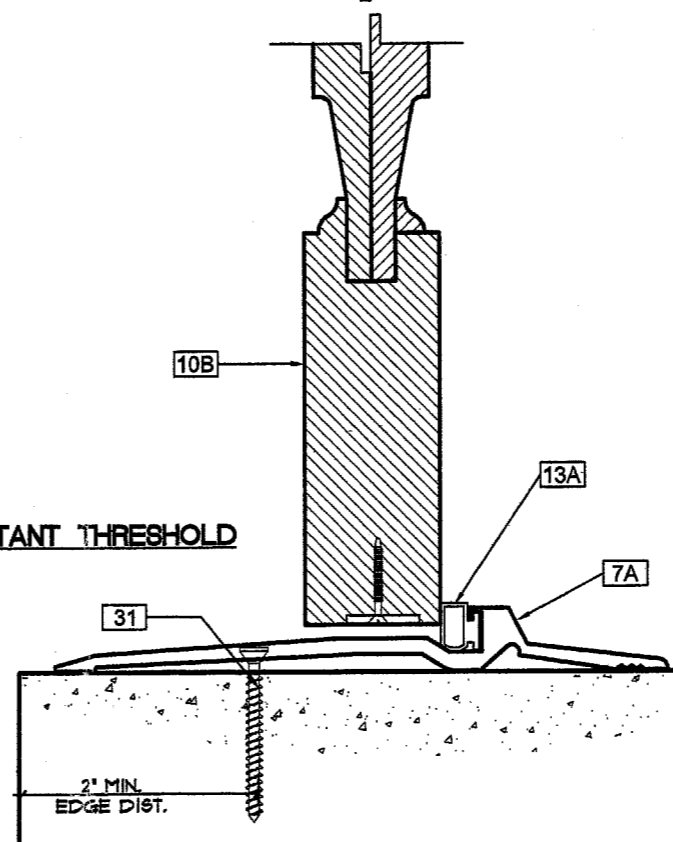
4
4 WOOD PANEL DETAIL
SCALE: HALF SCALE



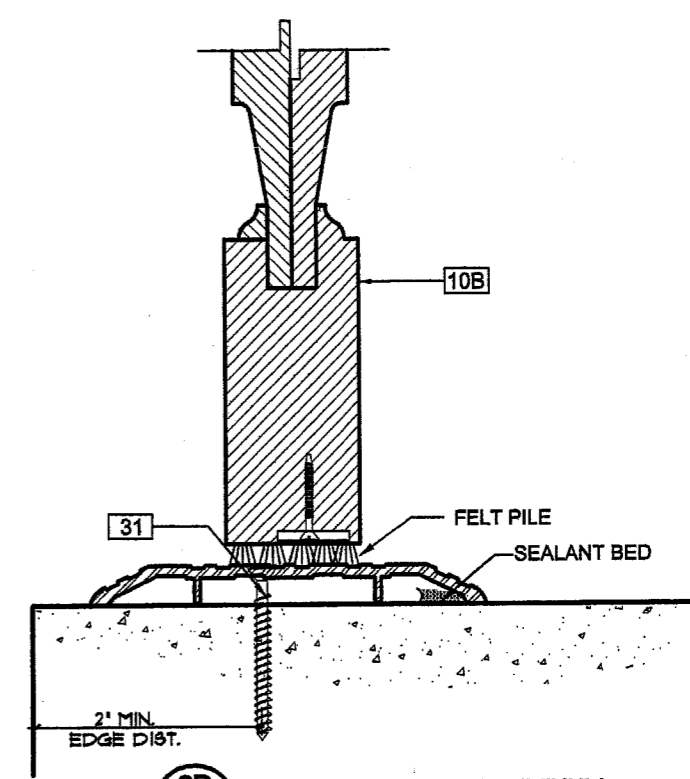
2
4 SILL DETAIL
• WATER RESISTANT THRESHOLD
SCALE: HALF SCALE



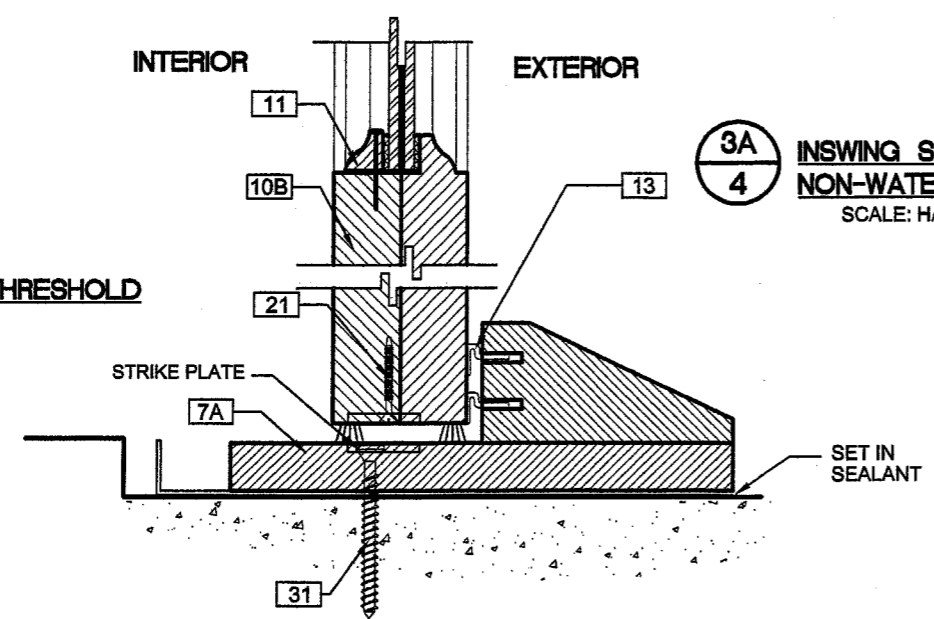
3
4 SILL DETAIL
• NON-WATER RESISTANT THRESHOLD
SCALE: HALF SCALE



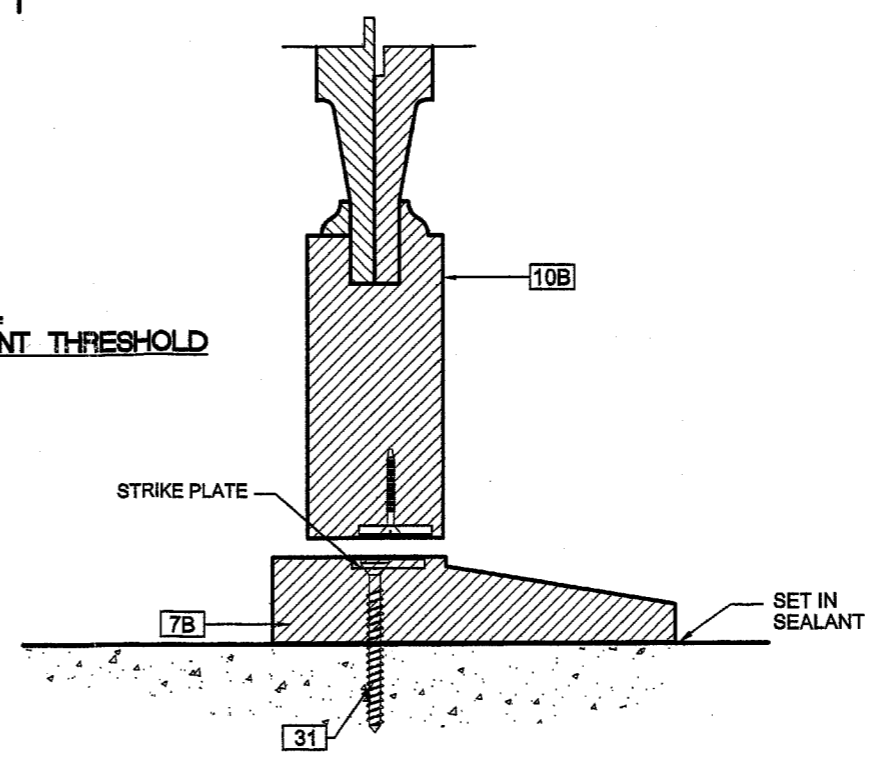
3B
4 OPTION: PEMKO ALUMINUM
SADDLE THRESHOLD



2A
4 INSWING SILL DETAIL
• WATER RESISTANT THRESHOLD
SCALE: HALF SCALE

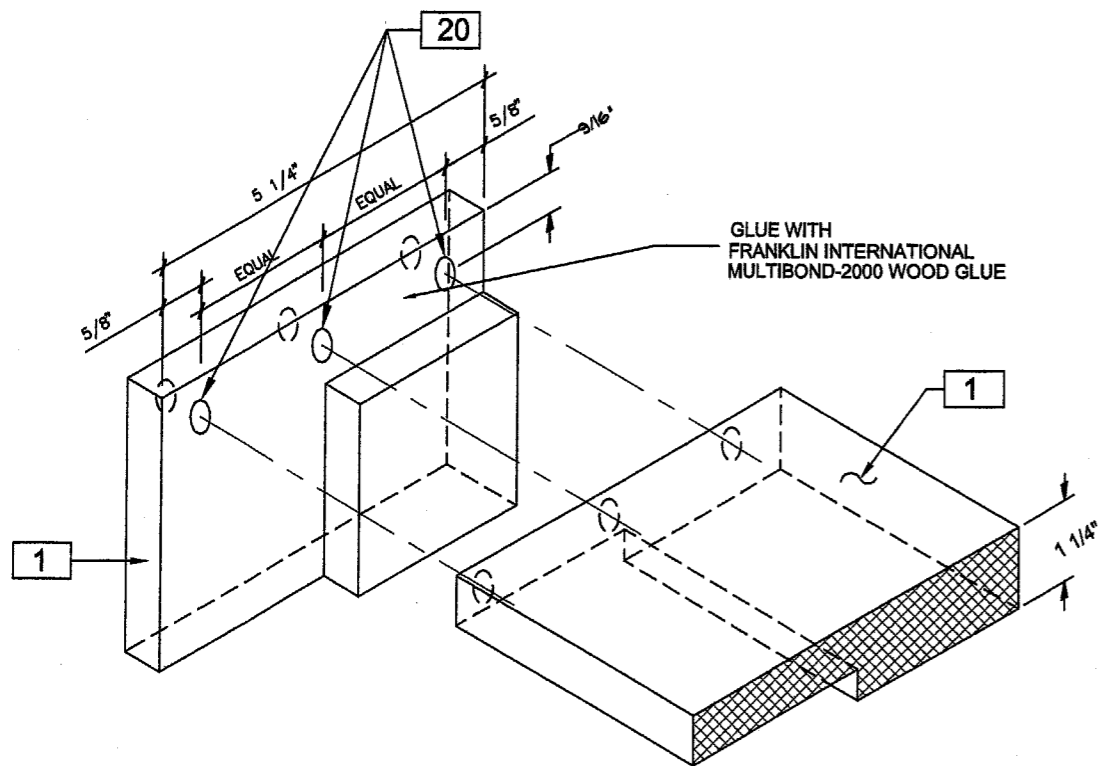


3A
4 INSWING SILL DETAIL
NON-WATER RESISTANT THRESHOLD
SCALE: HALF SCALE

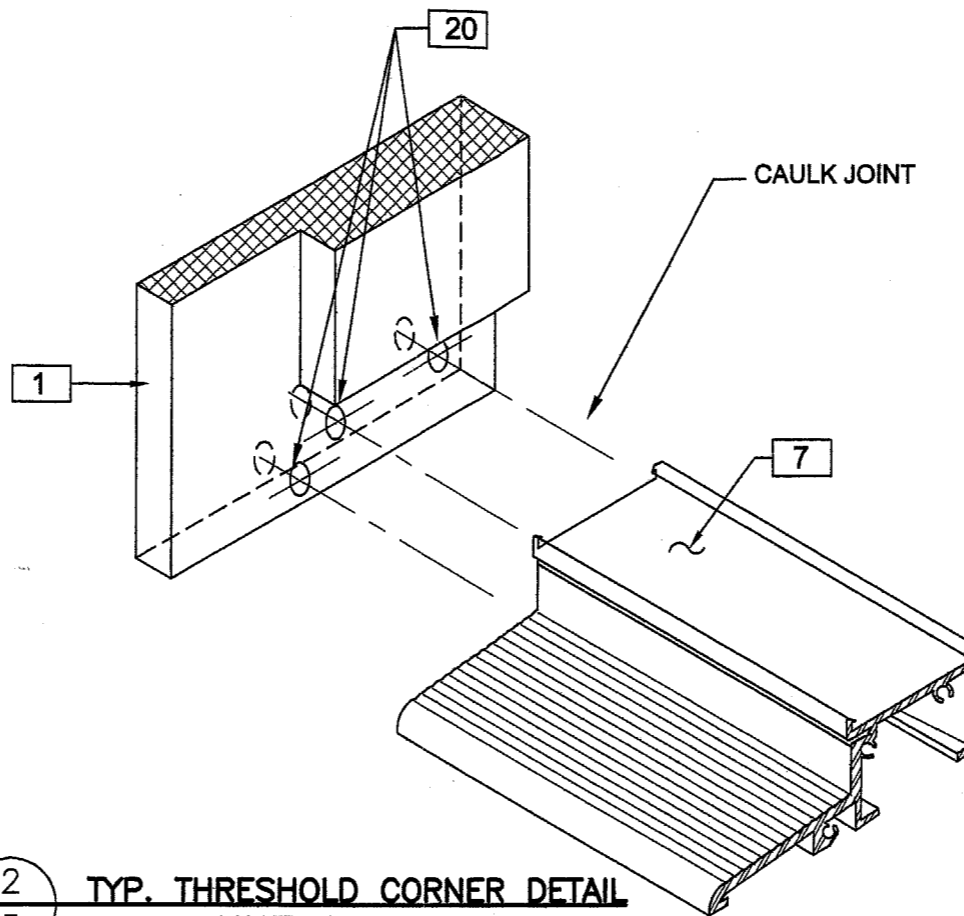


Approved as complying with the
Florida Building Code
Date AUG 5, 2004
NOA# 04-0421.05
Miami Dade Product Control
Division
By Manuel Perez

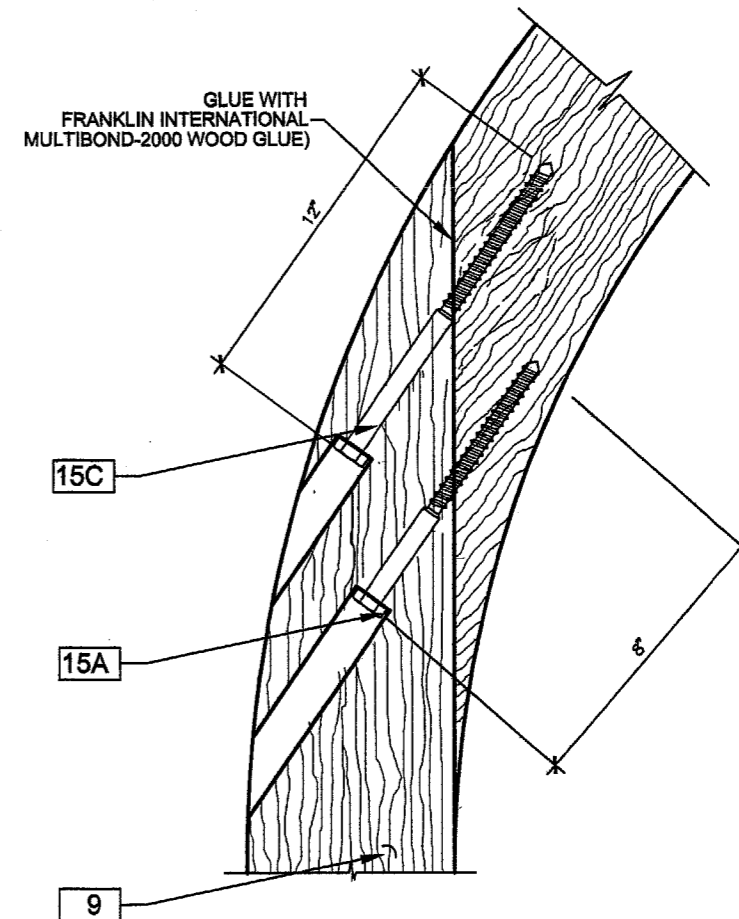
REVISION DESCRIPTION	NO.	DATE
	1	
DRAWING TITLE	TENNERS WOOD ENTRY DOORS	
MANUFACTURER	LAG DESIGN INDUSTRIAL MILLWORK CORP WEST HWY 36 SENECA, KS 66538 (800)462-3667	
BROMLEY - COOK ENGINEERING SERVICES	STRUCTURAL ENGINEERING SERVICES	
2004 N.E. 48th STREET FORT LAUDERDALE, FL 33308 PHONE: (954) 772-4624 FAX: (954) 772-4634		
CERTIFICATION	APR 23 2004 WILLIAM D. COOK, P.E. FLA. P.E. NO. 43904	
DATE:	04/05/04	
DRAWING NO.:	LAG-TEN	
SHEET NO.:	4 OF 9	



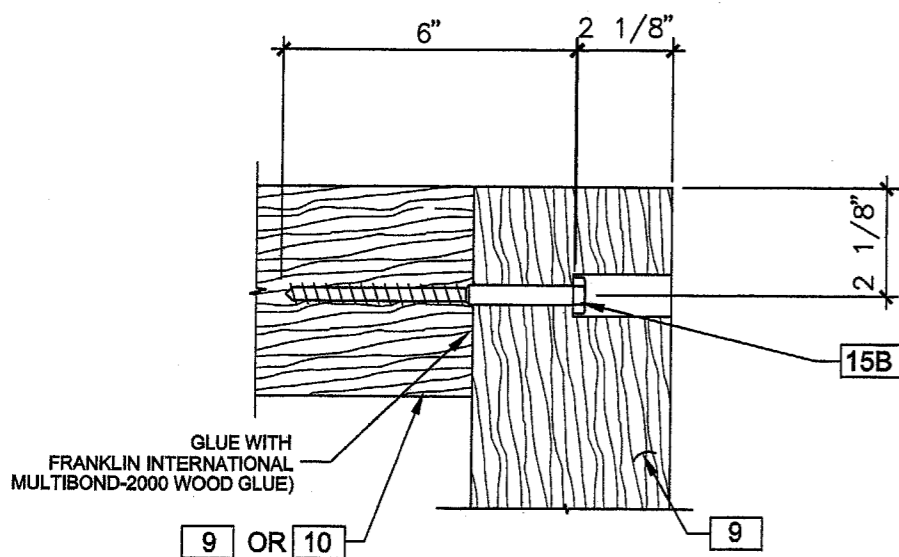
1
5 **TYP. FRAME CORNER DETAIL**
(ALL MEETING JAMB MEMBERS TO BE SCREWED AT ALL CORNERS)
SCALE: NTS



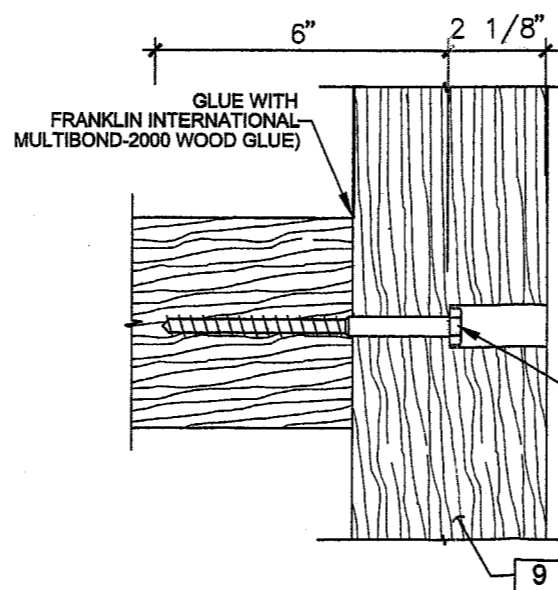
2
5 **TYP. THRESHOLD CORNER DETAIL**
(ALL MEETING JAMB MEMBERS TO BE SCREWED AT ALL CORNERS)
SCALE: NTS



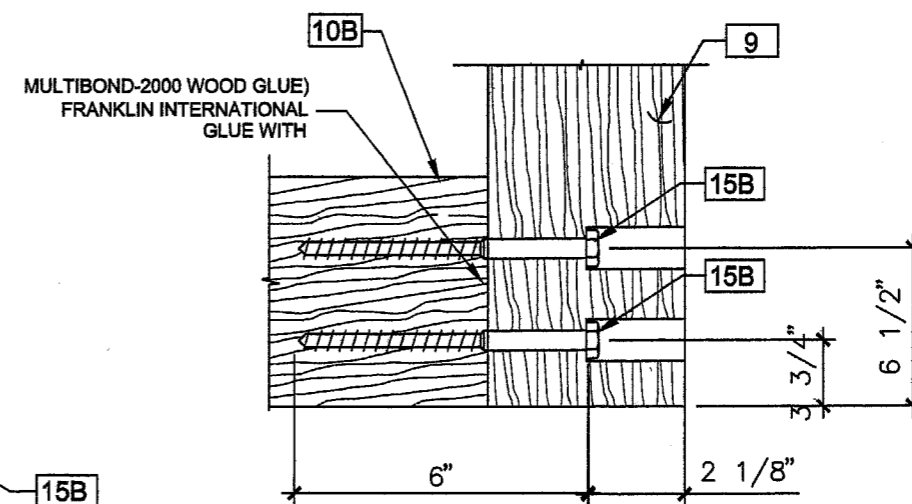
3
5 **ARCHED DOOR PANEL CORNER DETAIL**
SCALE: 1/4" = 1"



4
5 **DOOR PANEL CORNER DETAIL**
SCALE: 1/4" = 1"



4A
5 **TYPICAL MEETING RAIL DETAIL**
SCALE: 1/4" = 1"



4B
5 **TYP. BOTTOM RAIL DETAIL**
SCALE: 1/4" = 1"

Approved as complying with the Florida Building Code
Date 04.5.2004
NOA# 04-0427.05
Miami Dade Product Control Division
By Manuel Perez

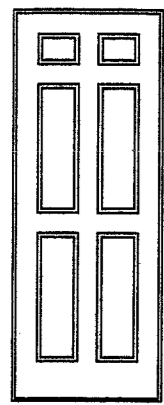
NO.	REVISION DESCRIPTION	BY	DATE
1			
2			

DRAWING TITLE: TENNERS WOOD ENTRY DOORS
MANUFACTURER: LAG DESIGN INDUSTRIAL MILLWORK CORP WEST HWY 36 SENECA, KS 66538 (800)462-3667

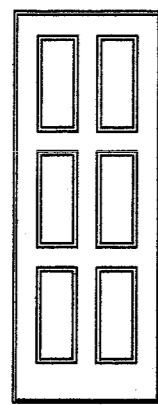
BROMLEY - COOK ENGINEERING, INC.
STRUCTURAL ENGINEERING SERVICES
2004 N.E. 49th STREET
FORT LAUDERDALE, FL 33308
PHONE: (954) 772-4624 FAX: (954) 772-4634

CERTIFICATION: APR 23 2004
WILLIAM D. COOK, P.E.
FLA. P.E. NO. 43904

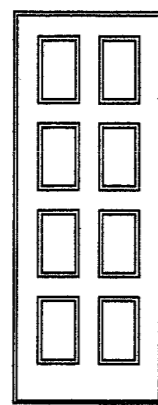
DATE: 04/05/04
DRAWING NO: LAG-TEN
SHEET NO: 5 OF 9



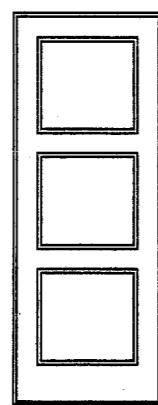
D-18



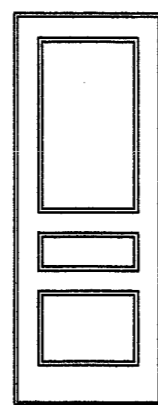
D-24



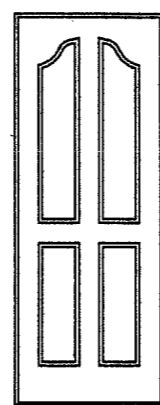
D-26



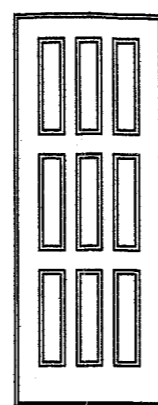
D-30



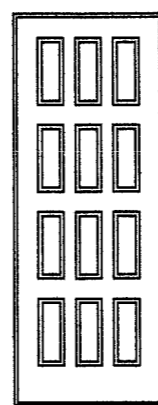
D-32



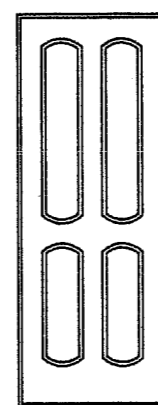
D-34



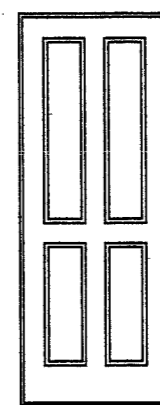
D-35



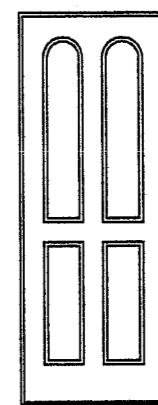
D-36



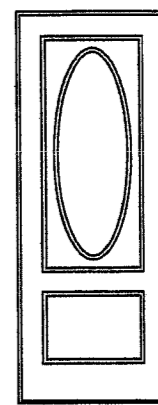
D-43A



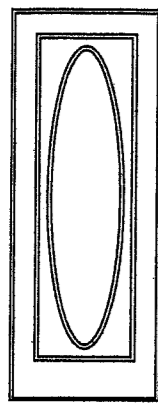
D-44



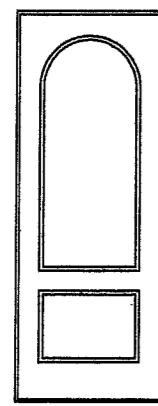
D-46



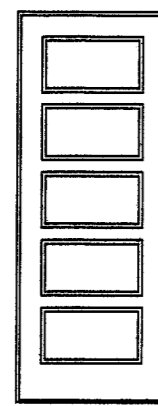
D-50



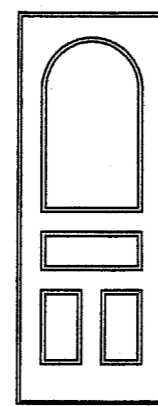
D-52



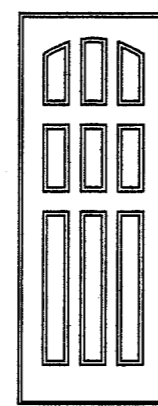
D-54



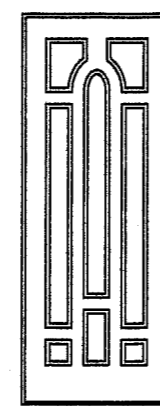
D-55



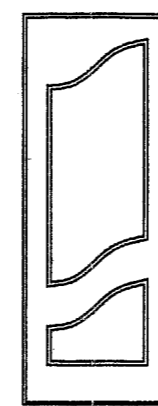
D-57



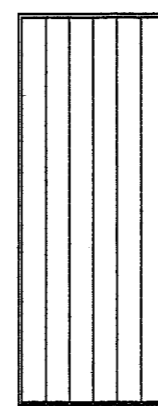
D-60



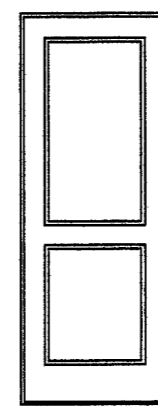
D-62



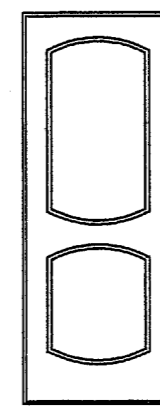
D-68



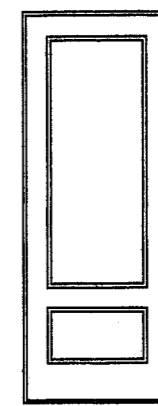
D-80



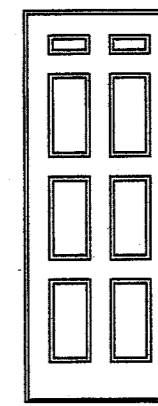
D-82



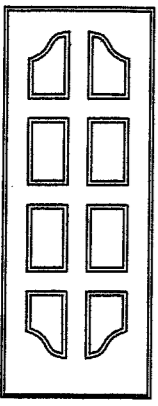
D-83



D-84



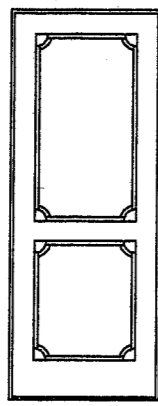
D-86



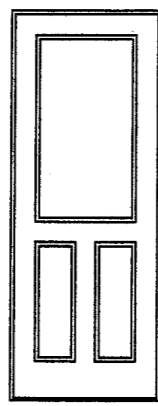
D-90



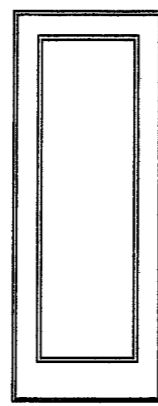
D-100



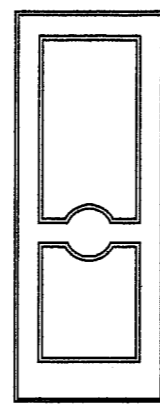
D-102



D-145



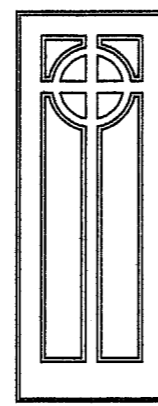
D-146



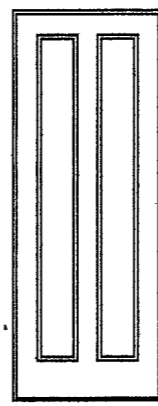
D-182



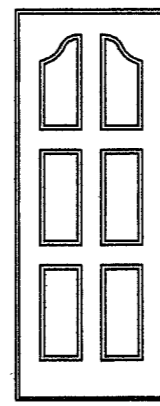
D-183



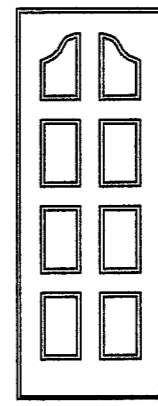
D-200



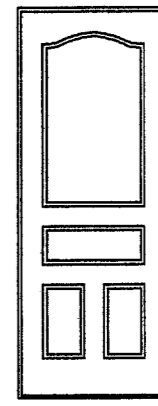
D-222



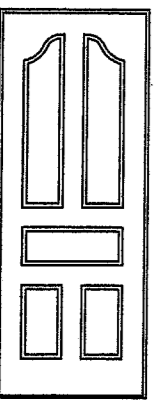
D-224



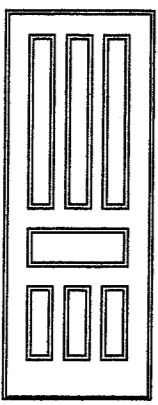
D-226



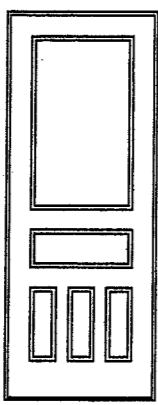
D-382



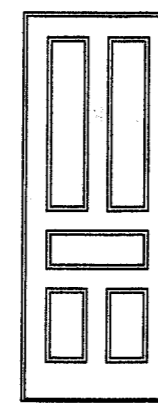
D-384



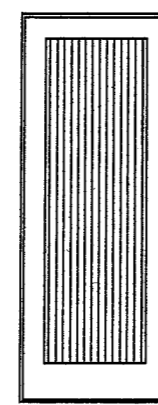
D-493



D-581



D-584



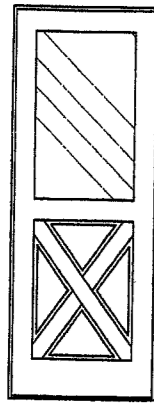
D-947

NOTE: DOOR PANELS MAY BE RECTANGULAR OR ROUND TOP

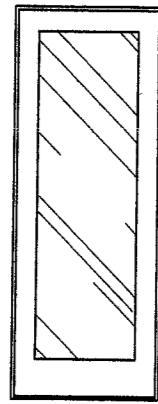
APPLICABLE SOLID WOOD
RAISED PANEL DOORS

Approved as complying with the
Florida Building Code
Date: AUG. 5, 2004
NOA# 04-0427.05
Miami Dade Product Control
Division
By: *Manuel Perez*

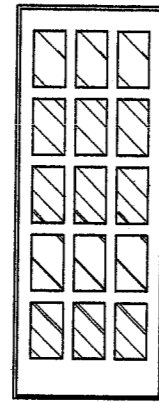
DRAWING TITLE TENNERS WOOD ENTRY DOORS	MANUFACTURER LAG DESIGN INDUSTRIAL MILLWORK CORP WEST HWAY 36 SENECA, KS 66538 (800)462-3667	NO.	1
		REVISION DESCRIPTION	
BROMLEY - COOK ENGINEERING, INC. STRUCTURAL ENGINEERING SERVICES 2004 N.E. 49th STREET FORT LAUDERDALE, FL 33308 PHONE: (954) 772-4624 FAX: (954) 772-4634	CERTIFICATION APR 23 2004 WILLIAM D. COOK, P.E. FLA. P.E. NO. 43904	DATE:	04/05/04
		DRAWING NO:	LAG-TEN
		SHEET NO:	6 OF 9



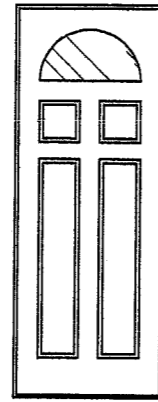
D-12



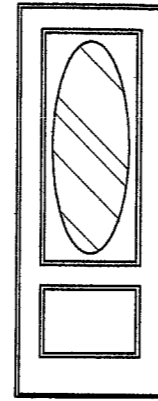
D-14



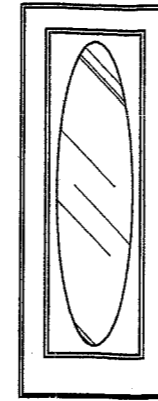
D-58



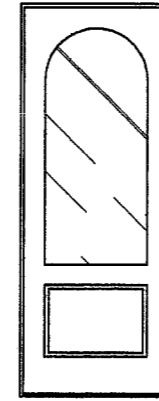
D-40A



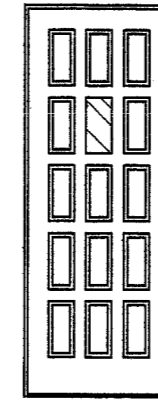
D-51



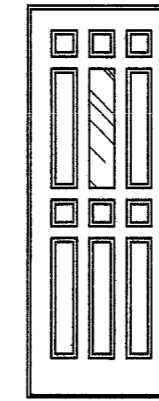
D-53



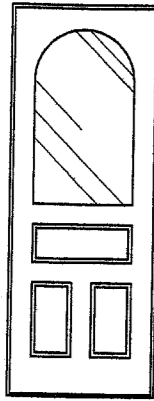
D-56



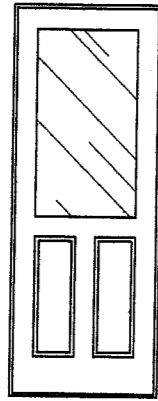
D-10



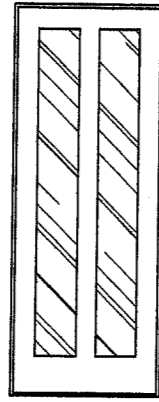
D-16



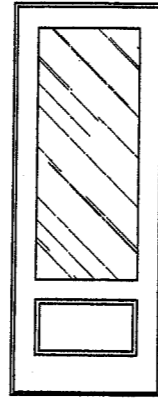
D-58



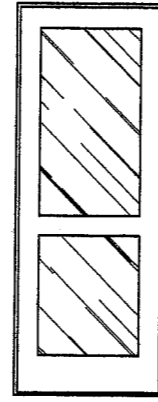
D-144



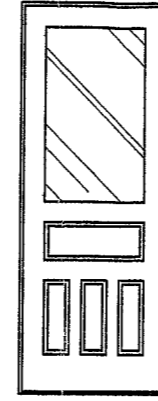
D-220



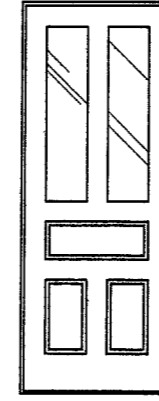
D-221



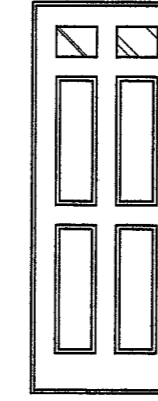
D-820



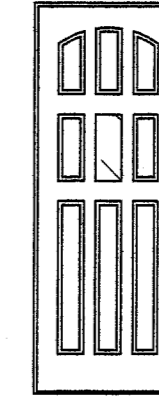
D-580



D-582

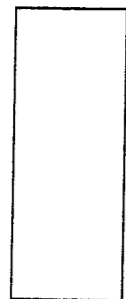
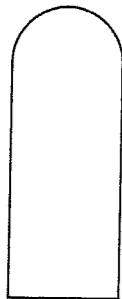


D-19



D-61

NOTE: DOOR PANELS MAY BE
RECTANGULAR OR ROUND TOP



APPLICABLE GLAZED
PANEL DOORS

NOTE:
APPLIED MUNTINS USED FOR
DIVIDED LIGHTS

Approved as complying with the
Florida Building Code
Date AUG. 5, 2004
NOA# 04-0427-05
Miami Dade Product Control
Division
By Manuel Perry

CERTIFICATION

WILLIAM D. COOK, P.E.
FLA. P.E. NO. 43904

DATE:
04/05/04

DRAWING NO:
LAG-TEN

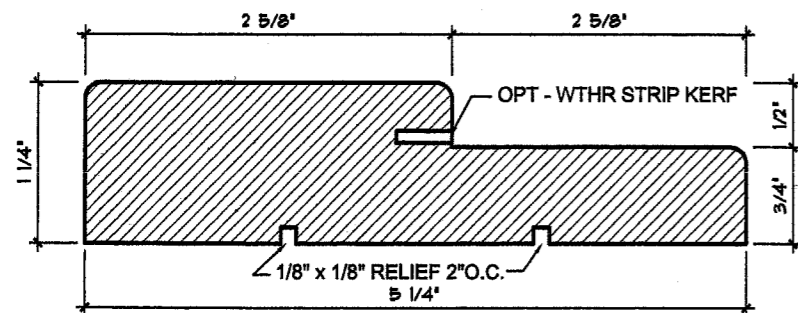
SHEET NO:
7 OF 9

DRAWING TITLE
TENNERS WOOD ENTRY DOORS
MANUFACTURER

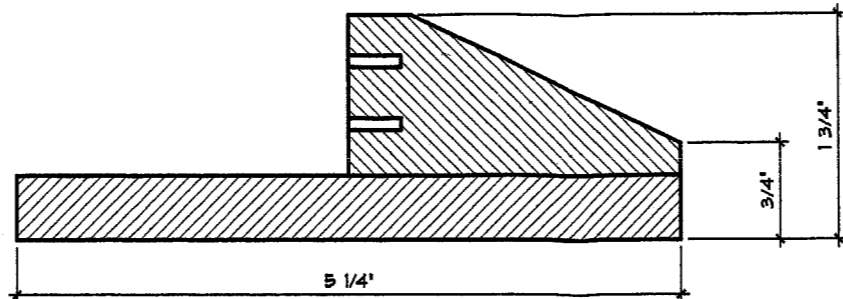
LAG DESIGN
INDUSTRIAL MILLWORK CORP
WEST HWY 36 SENECA, KS 66538
(800)462-3667

BROMLEY - COOK ENGINEERING, INC.
STRUCTURAL ENGINEERING SERVICES
2004 N.E. 48th STREET
FORT LAUDERDALE, FL 33308
PHONE: (954) 772-4624 FAX: (954) 772-4634

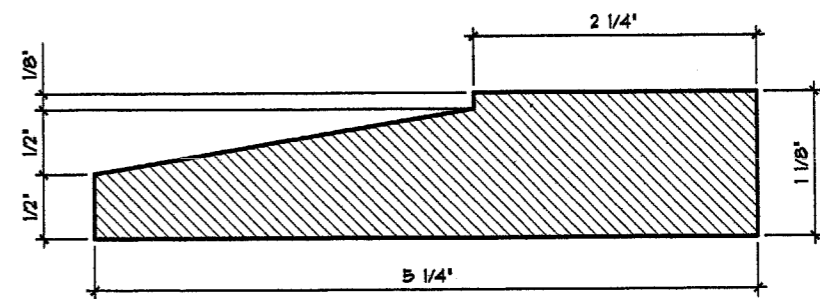
NO. 1
REVISION DESCRIPTION
BY
DATE



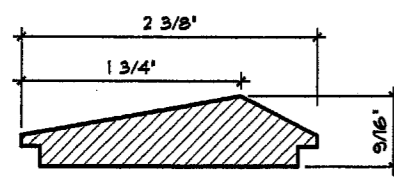
JAMB 1



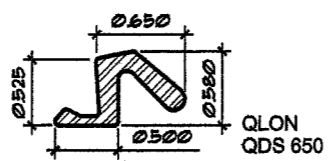
INSWING THRESHOLD 7A



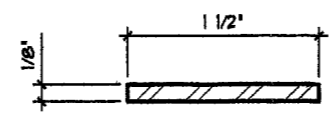
OPTIONAL INSWING THRESHOLD 7B



OAK CAP 8

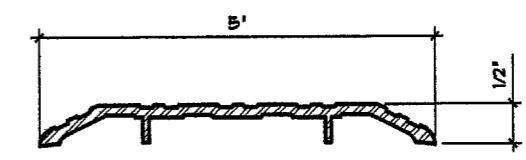


WEATHER STRIP 13

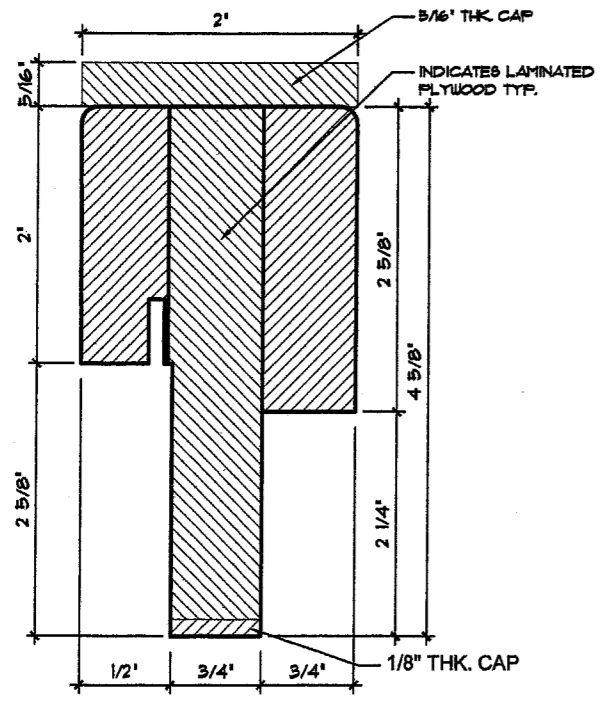


REINFORCING PLATE 14
(STEEL)

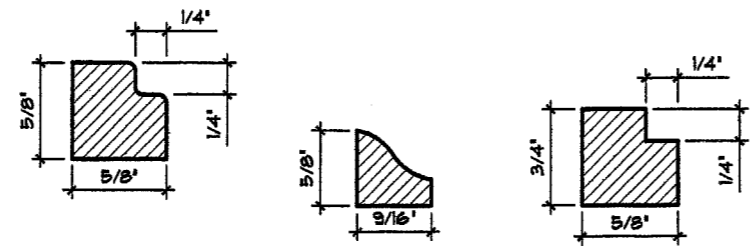
SEE DETAIL "2/4" FOR PLAN VIEW.



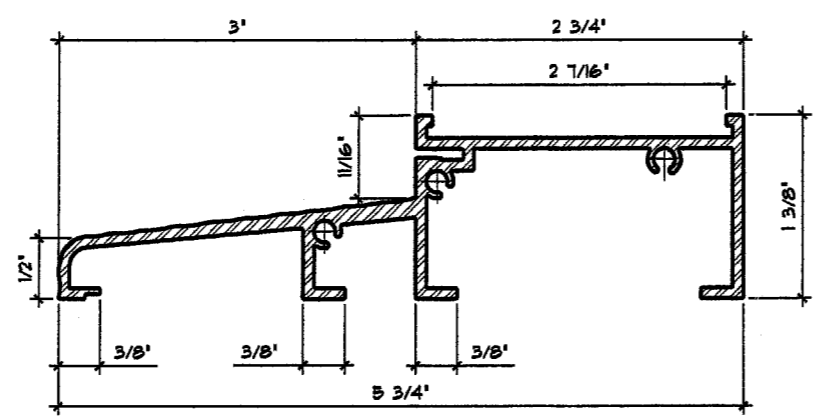
'PEMKO' SADDLE SILL 3B



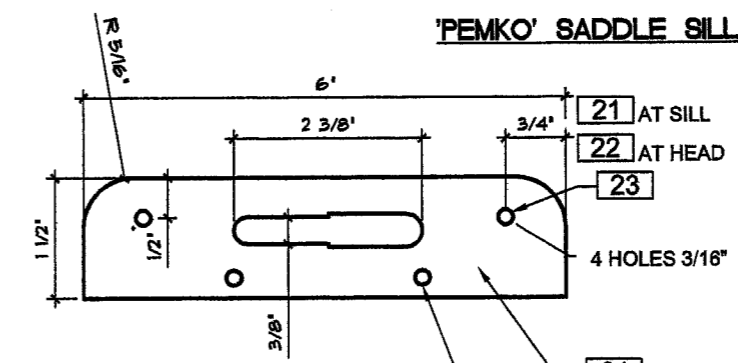
ASTRAGAL 12



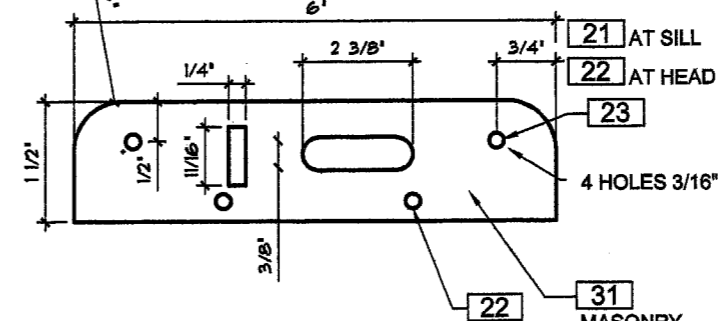
GLASS STOP 11



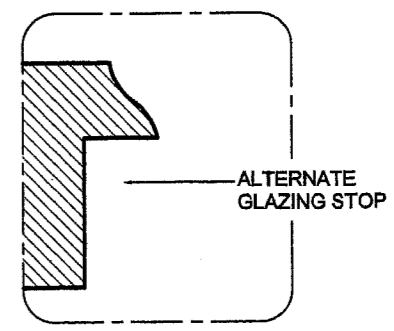
ALUMINUM THRESHOLD 7
(6063-T5)



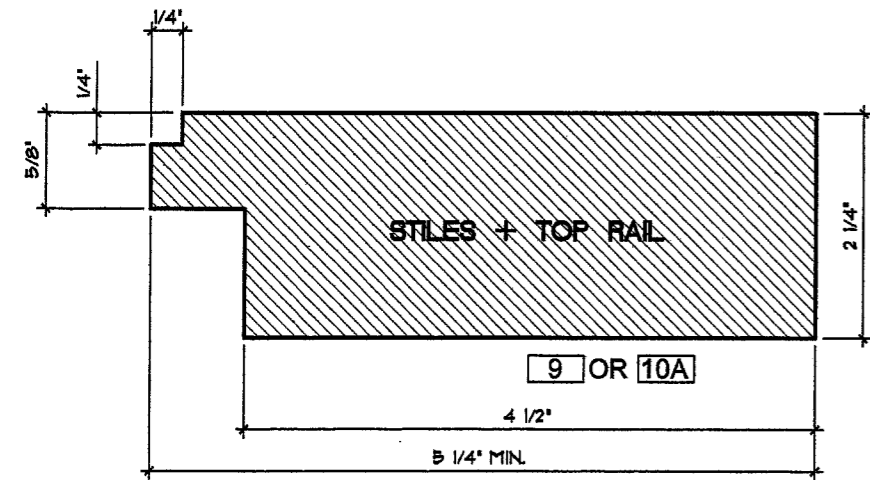
STRIKE PLATE 5
(6063-T5)



ALTERNATIVE STRIKE PLATE 5
(6063-T5)

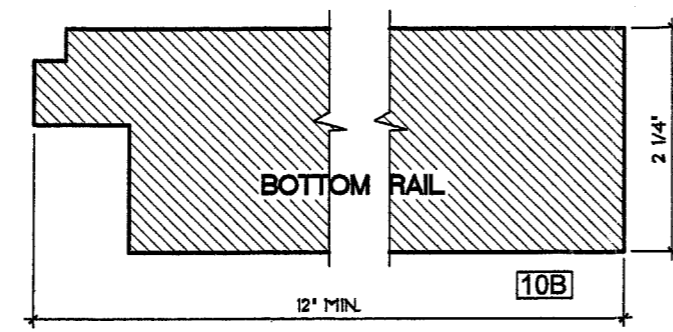


ALTERNATE GLAZING STOP



STILES + TOP RAIL

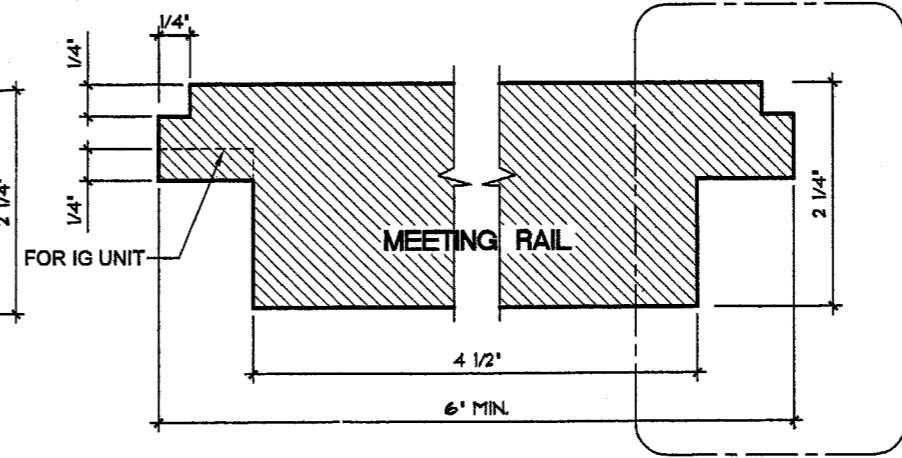
9 OR 10A



STILES + RAILS

10B

SCALE: N.T.S.



MEETING RAIL

NO.	REVISION DESCRIPTION	BY	DATE
1			

DRAWING TITLE: TENNERS WOOD ENTRY DOORS
 MANUFACTURER: LAG DESIGN INDUSTRIAL MILLWORK CORP
 WEST HWAY 36 SENECA, KS 66538
 (800)462-3667

BROMLEY - COOK ENGINEERING, INC.
 STRUCTURAL ENGINEERING SERVICES
 2004 N.E. 49th STREET
 FORT LAUDERDALE, FL 33308
 PHONE: (954) 772-4624 FAX: (954) 772-4634

CERTIFICATION: APR 2 2004
 WILLIAM D. COOK, P.E.
 FLA. P.E. NO. 43904

Approved as complying with the Florida Building Code
 Date: Aug. 5, 2004
 NOA#: 04-0427.05
 Miami Dade Product Control Division
 By: *Manuel Perez*

DATE:	04/05/04
DRAWING NO:	LAG-TEN
SHEET NO:	8 OF 9

MATERIAL LIST

1. SIDE & HEAD JAMB (1 1/4" X 5 1/4" (MIN.) RABBETED & KERFED MAHOGANY
NOTE: WOOD SPECIES OF EQUAL OR GREATER DENSITY MAY BE SUBSTITUTED FOR ALL WOOD COMPONENTS
2. LOCKING HARDWARE:
 - 2A. G.U. HARDWARE CREMONA R2 (8 POINT) DOOR BOLT SYSTEM WITH LEVER HANDLE & STRIKE AT 36" ABOVE BASE OF ACTIVE DOOR AND SHOOT BOLT MORTISED INTO DOOR PANEL WITH TOP AND BOTTOM STRIKES.
 - 2B. W & F TRILENNIUM MULTI-POINT DOOR BOLT SYSTEM WITH LEVER HANDLE & STRIKE AT 36" ABOVE BASE OF ACTIVE DOOR AND SHOOT BOLT MORTISED INTO DOOR PANEL WITH TOP AND BOTTOM STRIKES.
- 2C. TITAN CYLINDER LOCK & DEAD BOLT @ 36" & 52" ABOVE BASE OF DOOR
- 2D. MAGNUM SLIDE BOLTS @ TOP & BOTTOM
3. DOUBLE ACTING FLUSH BOLT BY G.U. AT THE INACTIVE DOOR WITH TOP & BOTTOM STRIKES
4. STEEL HINGES 4 1/2" X 4 1/2" X 3/32" THICK LEAFS (GENERIC) PAINTED, STAINLESS STEEL, OR OTHER FINISHES.
5. STRIKES: HEAD AND SILL STRIKE PLATE. ALUMINUM BAR 0.125" THICK X 1 1/2" X 8"
6. GLASS: SEE GLAZING TABLE ON SHEET 1
7. 5" X 1 3/8" 6063-T5 ALUMINUM BUMPER THRESHOLD.
8. MAHOGANY / OAK OR 6063-T5 ALUMINUM THRESHOLD CAP.
9. 2 1/4" X 5 1/4" (MIN.) MAHOGANY STILE.
10. RAILS:
 - A. 2 1/4" X 5 1/4" MAHOGANY TOP RAIL.
 - B. 2 1/4" X 10" (MIN.) MAHOGANY BOTTOM RAIL
11. GLASS STOP 9/16" x 5/8" OR 5/8" X 3/4"
12. ASTRAGAL 2" X 4 5/8" WITH 2 1/4" RABBET ON INACTIVE SIDE AND 2 5/8" RABBET ON ACTIVE SIDE
13. WEATHER STRIP 5/8" Q-LON QDS-650.
14. TOP / BOTTOM DOOR GUIDE REINFORCING 1/8" THK. STAINLESS STEEL x 10" LG x 1 1/8" WIDE
15. PANEL LAG BOLTS
 - A. PANEL 3/8" x 8" STEEL LAG SCREW
 - B. PANEL 3/8" x 6" STEEL LAG SCREW
 - C. PANEL 3/8" x 12" STEEL LAG SCREW
16. DOUBLE FACED TAPE
17. 4d X 1 1/4" FINISHING NAIL 1" FROM CORNERS AND SPACED MAX. 2 1/2" O.C. FASTENING GLASS STOPS TO PANELS.
18. SOLID MAHOGANY RAISED PANEL - 1 1/2" THK. @ CENTER, 5/8" THK. @ EDGES
19. NOT USED
20. #10 x 2 1/2" F.H.S.M.S. (3 PER JAMB CORNER FASTENING JAMB TO JAMB). TYP.
21. NO. 10 X 2" PFHMS FASTENING REINF. TO DOOR RAIL
22. NO. 10 X 3/4" PFHMS FASTENING STRIKE PLATE TO HEAD JAMB AND SILL (2 PER PLATE).
23. NO. 12 x 2 1/4" PFHMS FASTENING STRIKE PLATE TO HEAD JAMB & BUCK (SCREWS PENETRATE THROUGH JAMB & INTO BUCK 1 1/2"). 2 PER PLATE.
24. NOT USED
25. NOT USED
26. NO. 10"x2" TO INACTIVE PANEL ASTRAGAL (1" FROM END, BALANCE @ 11" O.C. STAGGERED. MIN.)
27. NO. 12 X 3/4" FHSMS FASTENING HINGE TO JAMB (2 PER HINGE).
28. NO. 12 X 2 1/2" FHSMS FASTENING HINGE TO JAMB (2 PER HINGE). FASTENERS: MUST PENETRATE BUCK MIN. 1 1/4"
29. NO. 12 X 1 1/4" FHSMS FASTENING HINGES TO PANELS (4 PER HINGE).
30. NOT USED
31. 3/16" TAPCONS (LENGTH AS REQUIRED FOR MIN. 1 3/4" CONCRETE EMBED)
POSITIONED AS SHOWN ON ELEVATION VIEWS AND SECTIONS.
32. NO. 12 F.H.S.M.S. FASTENING JAMB TO BUCKS. EMBED 1 1/2" MIN.

ALLOWABLE WIND PRESSURE CHART SINGLE OR DOUBLE DOORS - LG. MISSILE IMPACT

DESIGN LOAD - PSF															
NOMINAL DIMS		EXTERIOR (+)						INTERIOR (-)							
OVERALL HEIGHT FT/IN	LEAF WIDTH FT/IN	O/SWING WATER REQUIRED		INSWING WATER REQUIRED			O/SWING WATER NOT REQUIRED		INSWING WATER NOT REQUIRED						
		G-1	RP-1	G-2	G-1	G-2	RP-1	G-1	RP-1	G-2	G-1	G-2	RP-1		
SILLS		2/4		2A/4			2, 3 & 3B/4		2A, 3A & 3B/4			2, 3 & 3B/4		2A, 3A & 3B/4	
10/0	4/0	50.0	50.0	50.0	50.0	50.0	50.0	50.0	50.0	50.0	50.0	50.0	50.0	50.0	50.0
	3/6	55.4	50.0	50.0	55.4	50.0	50.0	55.4	50.0	50.0	55.4	50.0	50.0	50.0	
	3/0	60.0	50.0	50.0	62.7	50.0	50.0	62.7	50.0	50.0	62.7	50.0	50.0	50.0	
9/6	4/0	53.3	50.0	50.0	53.3	50.0	50.0	53.3	50.0	50.0	53.3	50.0	50.0	50.0	
	3/6	59.0	50.0	50.0	59.0	50.0	50.0	59.0	50.0	50.0	59.0	50.0	50.0	50.0	
	3/0	60.0	50.0	50.0	66.7	50.0	50.0	66.7	50.0	50.0	66.7	50.0	50.0	50.0	
9/0	4/0	57.1	50.0	50.0	57.1	50.0	50.0	57.1	50.0	50.0	57.1	50.0	50.0	50.0	
	3/6	60.0	50.0	50.0	63.1	50.0	50.0	63.1	50.0	50.0	63.1	50.0	50.0	50.0	
	3/0	60.0	50.0	50.0	70.0	50.0	50.0	70.0	50.0	50.0	70.0	50.0	50.0	50.0	
8/6	4/0	60.0	50.0	50.0	61.5	50.0	50.0	61.5	50.0	50.0	61.5	50.0	50.0	50.0	
	3/6	60.0	50.0	50.0	67.7	50.0	50.0	67.7	50.0	50.0	67.7	50.0	50.0	50.0	
	3/0	60.0	50.0	50.0	70.0	50.0	50.0	70.0	50.0	50.0	70.0	50.0	50.0	50.0	
8/0	4/0	60.0	50.0	50.0	66.7	50.0	50.0	66.7	50.0	50.0	66.7	50.0	50.0	50.0	
	3/6	60.0	50.0	50.0	70.0	50.0	50.0	70.0	50.0	50.0	70.0	50.0	50.0	50.0	
	3/0	60.0	50.0	50.0	70.0	50.0	50.0	70.0	50.0	50.0	70.0	50.0	50.0	50.0	

LEGEND:

- X-X - TYPE OF INFILL - SEE DOOR PANEL OPTIONS ON SHEET 1 OF 9
- XX
X - TYPE OF THRESHOLD SEE SHEET 4 OF 9

TESTED ASSEMBLIES:

OUTSWING:

- RECTANGULAR : 8' x 10' STRUCTURAL P = +50/ -50 psf
IMPACT & CYCLE P = +60 / -70 psf
- ARCHED TOP : 8' x 10' STRUCTURAL P = +50 / -50 psf
IMPACT & CYCLE P = +70 / -70 psf
- EYEBROW TOP : 8' x 10' STRUCTURAL P = +50/ -50 psf
IMPACT & CYCLE P = +50/ -50 psf

INSWING:

- RECTANGULAR : 8' x 10' P = +50/ -50 WATER @ 7.50 psf

Approved as complying with the
Florida Building Code
Date AUG 5, 2004
NOAH 04-0427.05
Miami Dade Product Control
Division
By Manuel Perez

NO.	1	REVISION DESCRIPTION		BY		DATE	
DRAWING TITLE	TENNERS WOOD ENTRY DOORS						
MANUFACTURER	LAG DESIGN INDUSTRIAL MILLWORK CORP WEST HWY 36 SENECA, KS 66538 (800)462-3667						
BROMLEY - COOK ENGINEERING, INC.	STRUCTURAL ENGINEERING SERVICES 2004 N.E. 48th STREET FORT LAUDERDALE, FL 33308 PHONE: (954) 772-4624 FAX: (954) 772-4634						
CERTIFICATION	WILLIAM D. COOK P.E. FLA. P.E. NO: 43804						
DATE:	04/05/04						
DRAWING NO:	LAG-TEN						
SHEET NO:	9 OF 9						