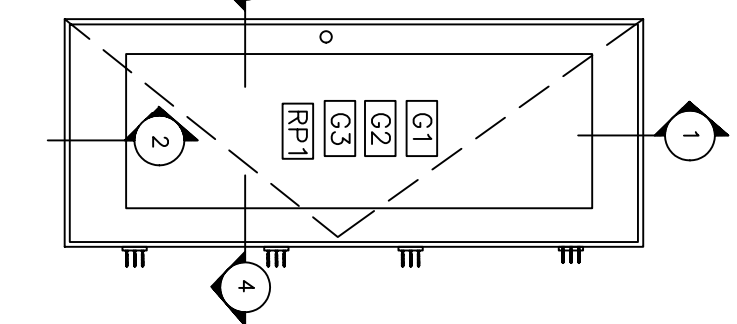
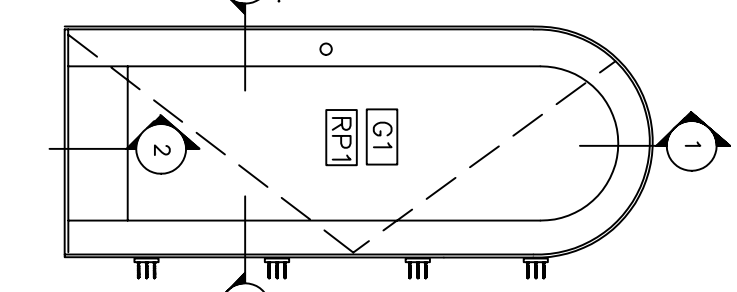
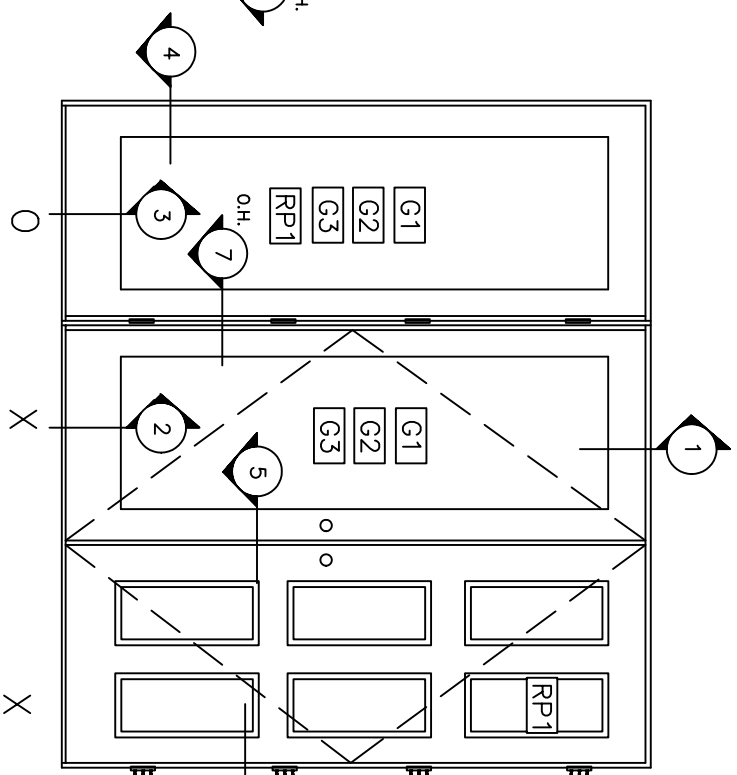
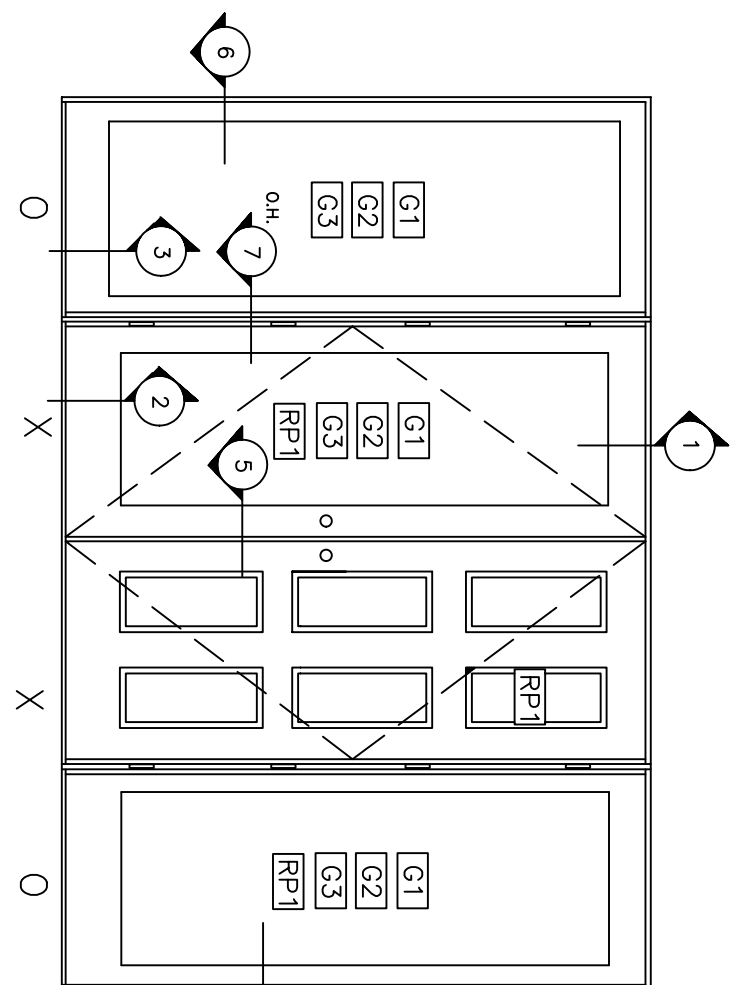


# STORMLINE WOOD ENTRY DOORS



TYPICAL MULTIPLE UNIT CONFIGURATIONS

TYPICAL SINGLE LEAF DOORS

### GENERAL NOTES:

1. THIS DOOR SYSTEM HAS BEEN TESTED, ANALYZED AND APPROVED FOR DESIGN PRESSURES NOT TO EXCEED THOSE SHOWN IN THE DESIGN LOAD TABLES.
2. BUCK, OPENINGS & BUCK FASTENERS MUST BE DESIGNED & INSTALLED TO WITHSTAND WIND LOADS FOR EACH APPLICATION.
3. BUCK FASTENERS MAY NOT EXCEED 16" O.C. SPACING AROUND OPENINGS.
4. ALL HARDWARE & FASTENERS SHALL BE IN ACCORDANCE WITH THESE DRAWINGS & MAY NOT VARY UNLESS SPECIFICALLY MENTIONED ON THE DRAWINGS.
5. THE DETAILS & SPECIFICATIONS SHOWN HEREIN REPRESENT THE PRODUCTS TESTED FOR WATER, AIR, IMPACT, CYCLIC & UNIFORM STATIC AIR PRESSURE TESTING IN CONFORMANCE WITH DADE COUNTY PROTOCOLS PA-201, 202 & 203.
6. ALL JAMB TO BUCK FASTENERS MUST PENETRATE THE BUCK A MINIMUM OF 1 1/4". IF PENETRATION IS LESS THAN 1 1/4", SCREW LENGTH SHALL BE INCREASED AS REQUIRED.
7. THESE GLASS DOOR SYSTEMS HAVE BEEN DESIGNED IN ACCORDANCE WITH THE 2001 FLORIDA BUILDING CODE.
8. FOR DETAILS AND INFORMATION ON ANCHORAGE, REFER TO MIAMI-DADE COUNTY PRODUCT APPROVAL DRAWINGS N.O.A. #

### DOOR PANEL OPTIONS

<b>G1</b>	7/16" LAMINATED 3/16" / 3/16" ANNEALED WITH .090 SOLLITA SAFLEX / KEEP SAFE GLAZED WITH 1/8" x 5/8" BEAD OF DOW 995 EACH SIDE.
<b>G2</b>	7/16" LAMINATED "SAF-GLASS" 3/16" / 3/16" ANNEALED WITH 0.070" POLYCARB BY SECURITY IMP'T. GLASS GLAZED WITH 1/8" x 5/8" BEAD OF GE 2801 EACH SIDE
<b>G3</b>	7/16" LAMINATED 3/16" / 3/16" ANNEALED WITH .0100" UVEKOL INTERLAYER (SMITH MOUNTAIN) EACH SIDE
<b>RP1</b>	LARGE MISSILE IMPACT RAISED WOOD PANEL, MAHOGANY
DOOR PANEL MAY BE RAISED WOOD PANEL OR GLAZED OR COMBINATIONS	

DRAWING TITLE  
STORM LINE WOOD ENTRY DOORS  
PROJECT:  
TYPICAL INSTALLATION DETAILS

NO.	REVISION DESCRIPTION	BY	DATE

LAG DESIGN  
INDUSTRIAL MILLWORK CORP  
WEST H/WAY 36 SENECA, KS 66538  
(800)462-3667

### CERTIFICATION

DATE:  
02/28/05  
DRAWING NO:  
CAT10LOG1  
SHEET NO:  
1 OF 3